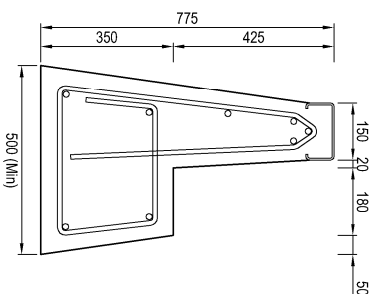
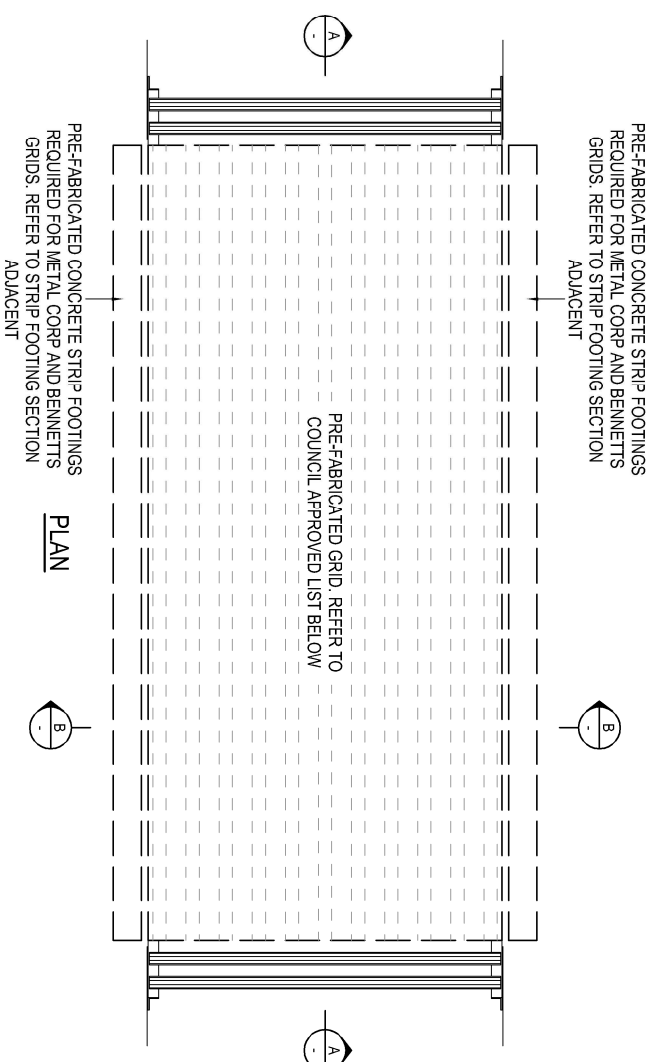


**NOTES - GENERAL**

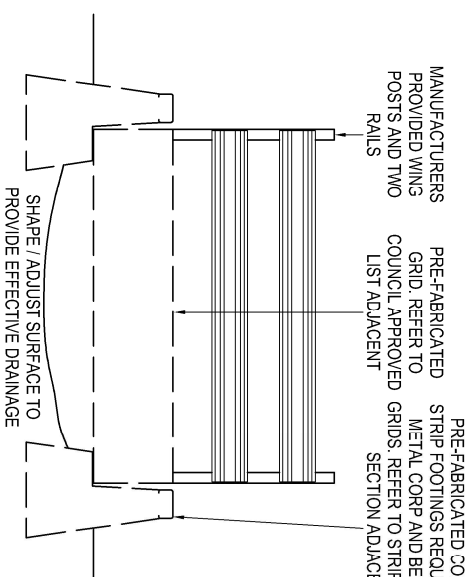
- Public gates are to be installed in accordance with council's Public Gate Policy, the Roads Act 1993, the Roads Regulation 2008, Standard Drawing SD0106 (this drawing) and to the satisfaction of council's Director Infrastructure and Engineering Services
- These plans are to be read in conjunction with council's 'Public Gates Permit Application' form and 'Information for Applicants'
- The 'Public Gate' is to comprise a steel stock grid with side-rail wings on concrete footings and an adjacent gate
- A gate of minimum 3.6 metres width shall be installed adjacent to the grid. The grid shall be positioned on the centreline of the road formation
- A number of pre-fabricated commercially available stock grids are acceptable to council for installation (refer to list below). Approved grids are to be installed in accordance with the manufacturer's specifications, Roads Act 1993, Roads Regulation 2008, council's Standard Drawing SD0105 and any additional conditions of council
- Wing posts and two (2) rails (as shown) shall be provided with preferred stock grid
- Four (4) D9-206A 'HAZARD' signs (2x left and 2x right) shall be attached to the approach side sides of all wings as shown
- Two (2) R8-202A 'PUBLIC GATE No. \_\_\_' signs shall be fixed to both sides of the gate
- Two (2) W5-16A 'GRID' signs shall be installed on both approaches at 80 to 100 metres from the grid. Sight distance shall be 50 metres from the approach to the sign
- Two (2) R9-9A 'ONE LANE' signs shall be installed beneath the W5-16A 'GRID' signs for all grids installed on Category 1 or 2 roads
- All D9-206, W5-16 and R9-9 signs shall be class 1 retro-reflective
- A 'Public Gate Permit' shall be issued to the applicant following council inspection of a satisfactory public gate installation
- It shall be the responsibility of the permit holder to maintain the public gate installation to the satisfaction of council



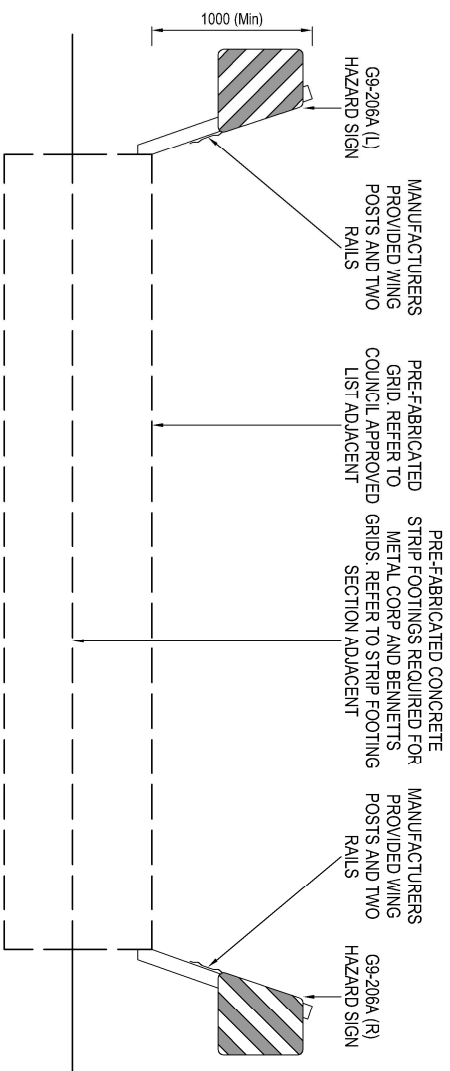
**SECTION - STRIP FOOTING**



**PLAN**



**SECTION B - B**

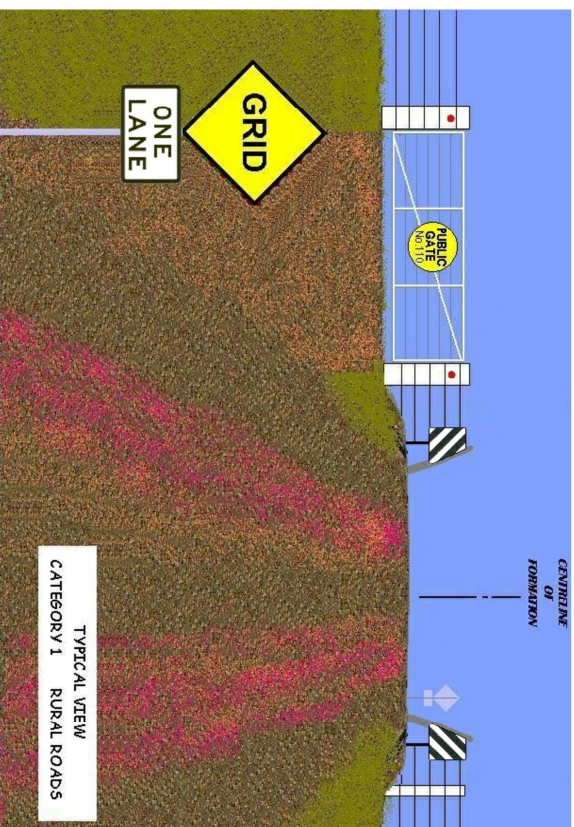


**SECTION A - A**

**COUNCIL APPROVED GRIDS**

**CATEGORY 1 & 2 ROADS**

- Bennett's Steel: 4.2 m steel grid. Cast in-situ or pre-fab concrete footings required
  - Metalcorp 'Highway': 4.2 m steel grid. Cast in-situ or pre-fab concrete footings required
  - Aprilla 'S13DMR': 4.1 m pre-cast concrete and steel grid, including type 'A' sides
  - Monier Rock 'Highway': 4.0 m pre-cast concrete and steel grid, including mesh type sides
- CATEGORY 3, 4 & 5 ROADS**
- Bennett's Steel: 8.4 m steel grid. Cast in-situ or pre-fab concrete footings required
  - Metalcorp 'Highway': 8.4 m steel grid. Cast in-situ or pre-fab concrete footings required
  - Aprilla 'S13DMR': 8.1 m pre-cast concrete and steel grid, including double grid joiner and type 'A' sides
  - Monier Rock 'Highway': 8.2 m pre-cast concrete and steel grid, including double grid joiner and mesh type sides



**TYPICAL VIEW  
CATEGORY 1  
RURAL ROADS**

Rev.	Date	Description	Drawn	Auth.	Rev.	Date	Description	Drawn	Auth.
B	18/05/2020	Title block updated	AJC	RP					
A	08/03/2016	Issued for construction	RL	CG					

Drawn	Checked	Approved on behalf of	Permit Details
RL	GC 12/08/2015	MIDCOAST council	STANDARD DRAWING PUBLIC GATES AND STOCK GRIDS FOR ROAD CATEGORIES 1 TO 5

Sheet No.	Revision
01	B
No. of Sheets	Standard Dwg. No.
01	SD0106