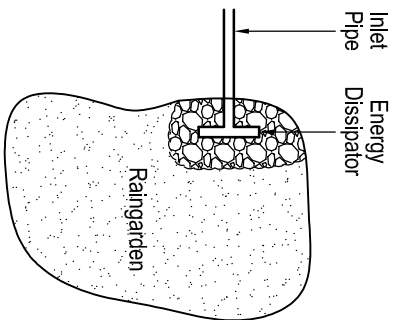
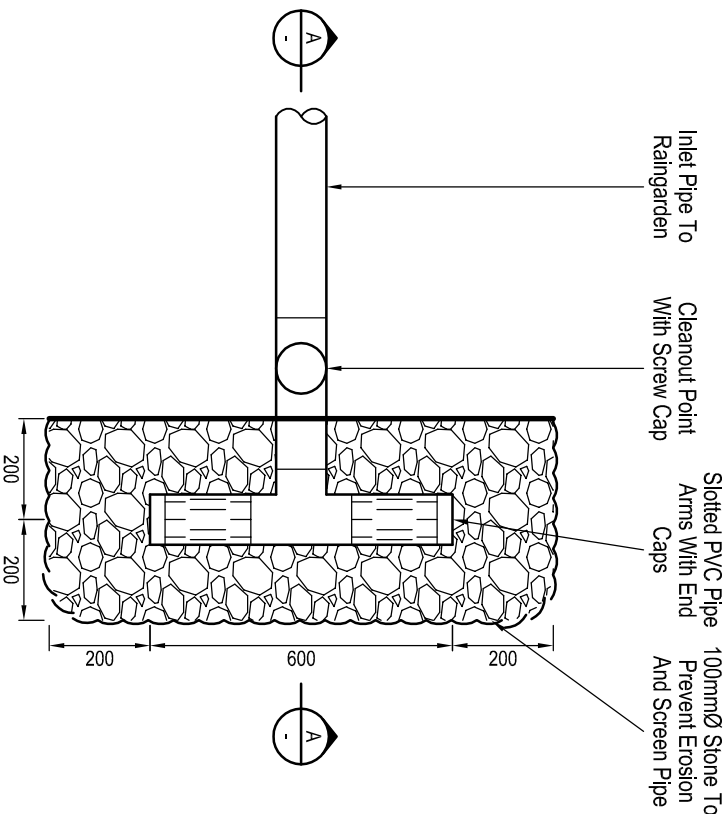


ENERGY DISSIPATOR - for Raingardens on Steep Slopes (for inlet pipes with slopes greater than 10% grade)

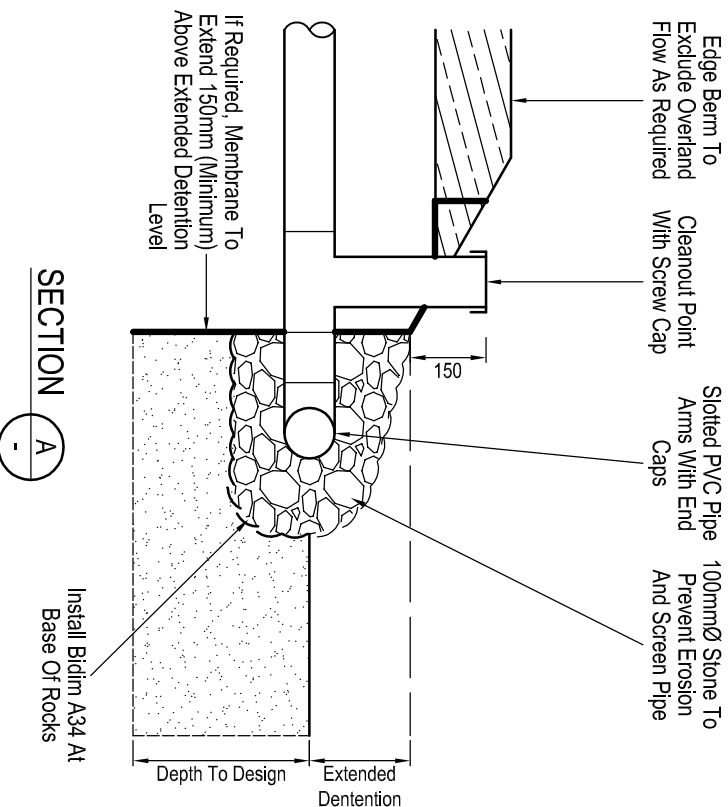


OVERVIEW PLAN



PLAN

Note:
For Impervious Areas Less Than 150m² Use 1000 \varnothing uPVC Pipes Otherwise Use 150mm \varnothing



SECTION



Install Bidim A34 At Base Of Rocks

Edge Berm To Exclude Overland Flow As Required

Cleanout Point With Screw Cap


Slotted PVC Pipe Arms With End Caps

100mm \varnothing Stone To Prevent Erosion And Screen Pipe

If Required, Membrane To Extend 150mm (Minimum) Above Extended Detention Level

150

Depth To Design
Extended Detention

 MIDCOAST council	<p>STANDARD DRAWING FOR ENERGY DISSIPATOR (FOR INLET PIPES ON SLOPES GREATER THAN 10% GRADE) PLAN AND CROSS SECTION</p>
DATE: June 2018	SHEET No. 1 OF 1 SHEETS