

# Mapping important agricultural land in NSW

## What is important agricultural land?

Important agricultural land is land that contains a combination of resources that is highly suitable for agricultural industries. The identification of important agricultural land enables the significance of those lands to be recognised and planned.

Important agricultural land may include existing agricultural land or areas that have future agricultural potential. Information from biophysical, infrastructure, socio-economic or agricultural industry sources is used to identify those lands.

Additional information on industry challenges, economic contribution and development prospects can provide the broader context for important agricultural land to assist land use planning for agriculture.

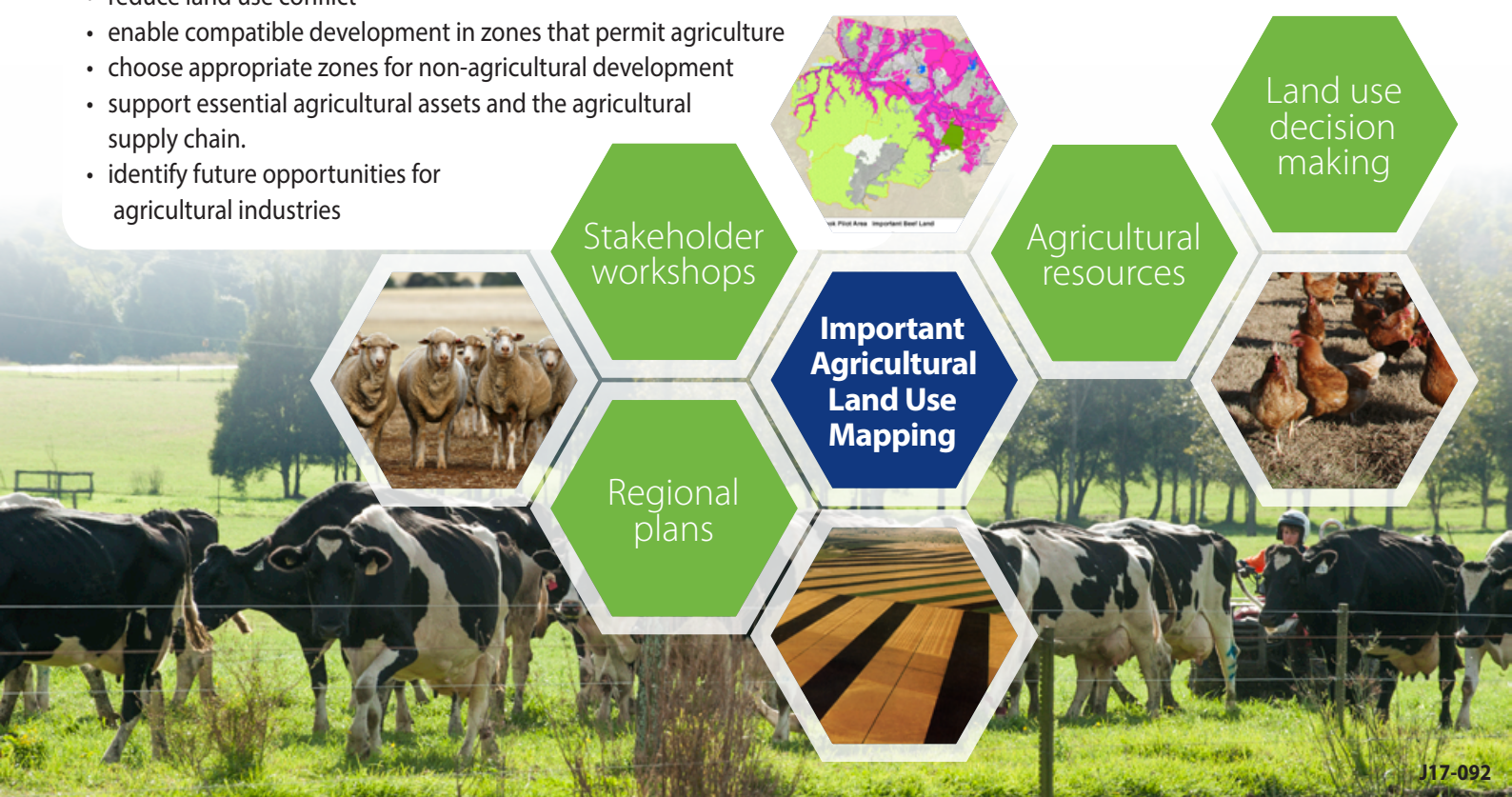
## The benefits of mapping important agricultural lands

A map of important agricultural lands enables landholders, land planning agencies, consultants and industry to consider the location and multiple community values that important agricultural lands provide. Knowing where important agricultural land is located and understanding its location, value and contribution will assist in making decisions about current and future agricultural land uses. This information will help government and industry to:

- provide more certainty for agribusiness to remain, invest and grow
- reduce land use conflict
- enable compatible development in zones that permit agriculture
- choose appropriate zones for non-agricultural development
- support essential agricultural assets and the agricultural supply chain.
- identify future opportunities for agricultural industries

## NSW Department of Primary Industries Important agricultural land mapping program

The NSW Department of Primary Industries (DPI) is undertaking a three year mapping program across nine regions in NSW commencing in August 2017 to assist local government and other organisations map important agricultural land. The program supports the NSW Department of Planning and Environment's regional planning targets that include actions to map important agricultural lands in NSW.



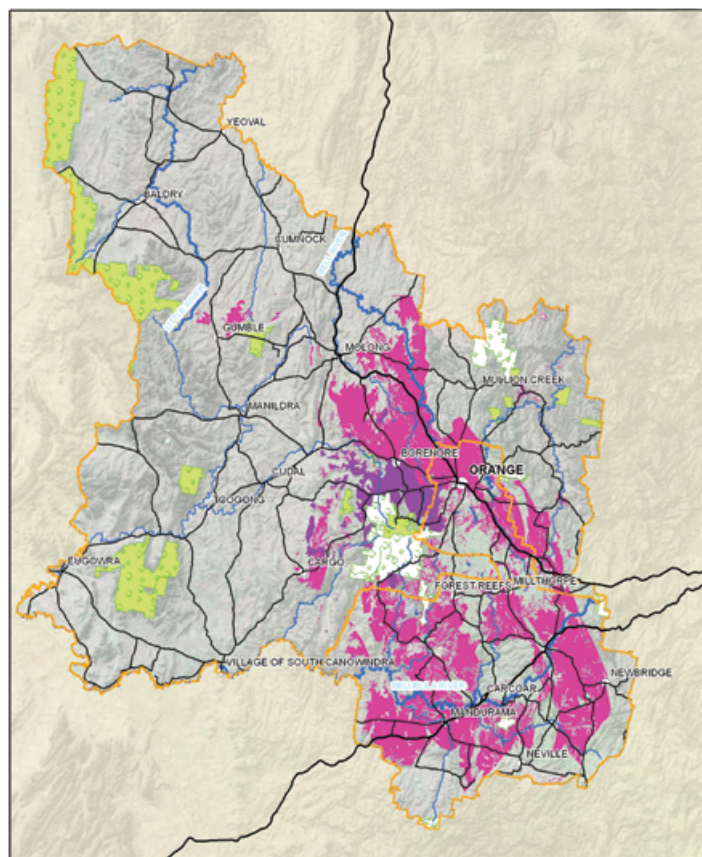


## Example of mapping important agricultural land

Important agricultural land mapping undertaken in the Central West of NSW enabled a better understanding of the quality and extent of agricultural land and areas suitable for the future growth and development of agricultural industry and other land uses.

### Identifying important agricultural land guideline

The NSW DPI has produced *A guideline to identifying important agricultural land in NSW*. The guideline explains the factors that need to be considered when developing mapping, different mapping approaches, data sources and other information. The guideline is available on the DPI Agricultural Land Use Planning website at [www.dpi.nsw.gov.au/agriculture/lup](http://www.dpi.nsw.gov.au/agriculture/lup) under the heading agricultural industry mapping.



## Further information

Information on important agricultural land mapping, the Central West mapping project (undertaken by NSW DPI 2012), sustainable agriculture development, and land use planning is available on the Agricultural Land Use Planning website at [www.dpi.nsw.gov.au/agriculture/lup](http://www.dpi.nsw.gov.au/agriculture/lup).

The Agricultural Land Use Planning Unit can also assist with any important agricultural industry mapping enquiries by emailing [landuse.ag@dpi.nsw.gov.au](mailto:landuse.ag@dpi.nsw.gov.au).



Department of  
Primary Industries