

Figure 6.2 Principles for Hawks Nest Township

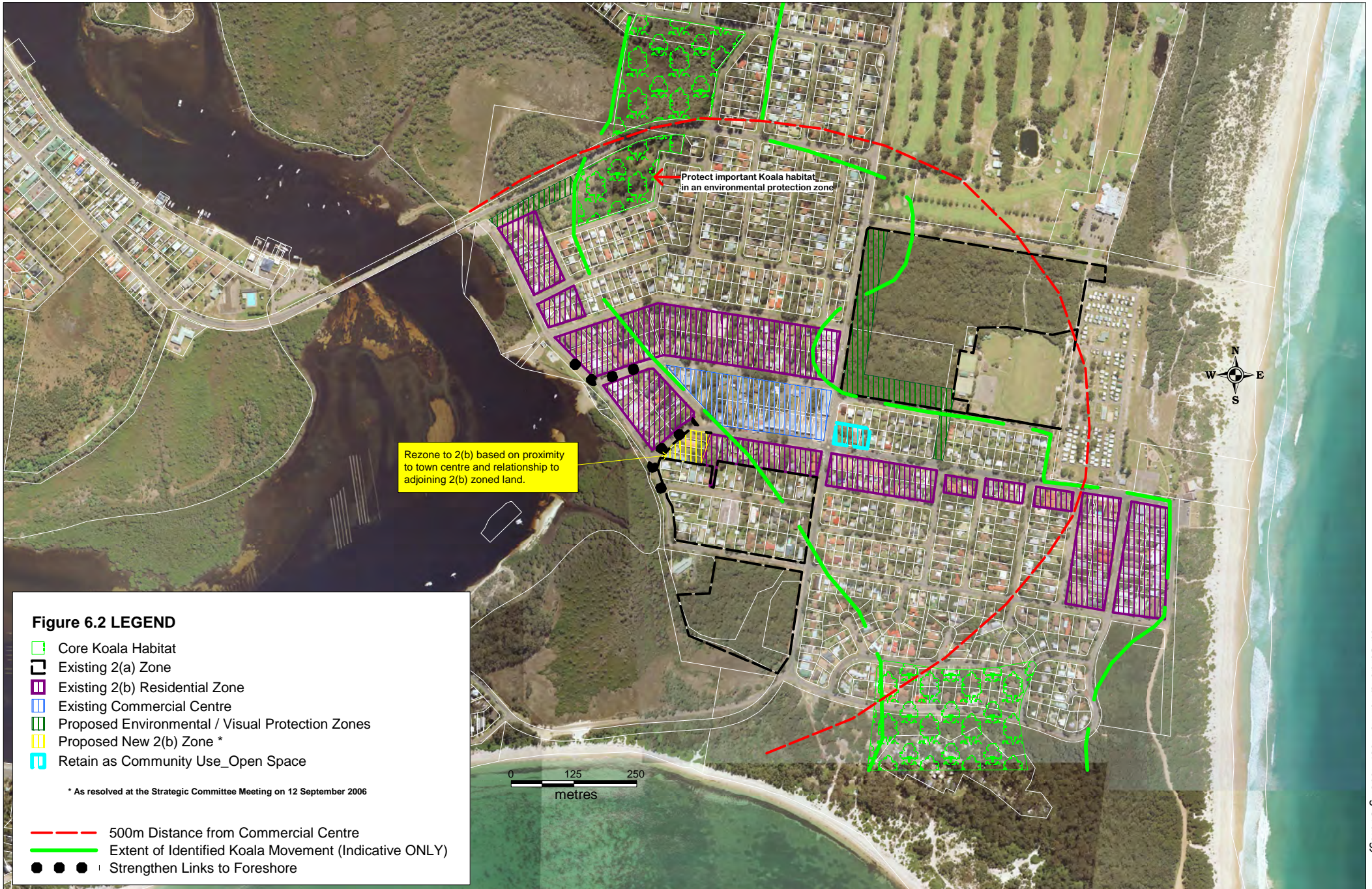


Figure 6.2 LEGEND

- Core Koala Habitat
- Existing 2(a) Zone
- Existing 2(b) Residential Zone
- Existing Commercial Centre
- Proposed Environmental / Visual Protection Zones
- Proposed New 2(b) Zone *
- Retain as Community Use_Open Space

* As resolved at the Strategic Committee Meeting on 12 September 2006

- 500m Distance from Commercial Centre
- Extent of Identified Koala Movement (Indicative ONLY)
- Strengthen Links to Foreshore