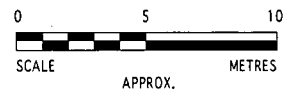


LEGEND

- E — ELECTRICITY
- - - W - - - WATER
- SW - - - STORMWATER
- - - T - - - TELSTRA

- GROUNDWATER MONITORING WELL / SOIL BORE
- SOIL BORE
- UNDERGROUND STORAGE TANK
- DISPENSER



STORAGE TANKS		
UST 1	11.8kL	PULP95
UST 2	16.2kL	ULP91
UST 3	11.8kL	ADF

DISPENSERS	
1	PULP95
2	ULP91
3	ADF



PO Box 165 Newcastle NSW 2300
 M: +61 438 233 779
 E: tim@auroraenvironmentalconsulting.com.au

CHECKED:

APPROVED:

Palms Oasis Caravan Park, Pacific Palms NSW
 Environmental Site Assessment - March 2016

SITE PLAN

CLIENT: INGENIA COMMUNITIES PTY LTD LOCATION: 321 BOOMERANG DRIVE, PACIFIC PALMS, NSW

DESIGNED: TB	DATE: 24.3.2016	PROJECT NO.: P16021	FIGURE: 2
DRAWN: RC	REV. NO: A		



PLAN
SCALE 1: 500

This plan includes coloured information. If you have a black and white copy you do not have all of the information. This note is coloured RED.

working beyond expectations

OVERALL SITE PLAN

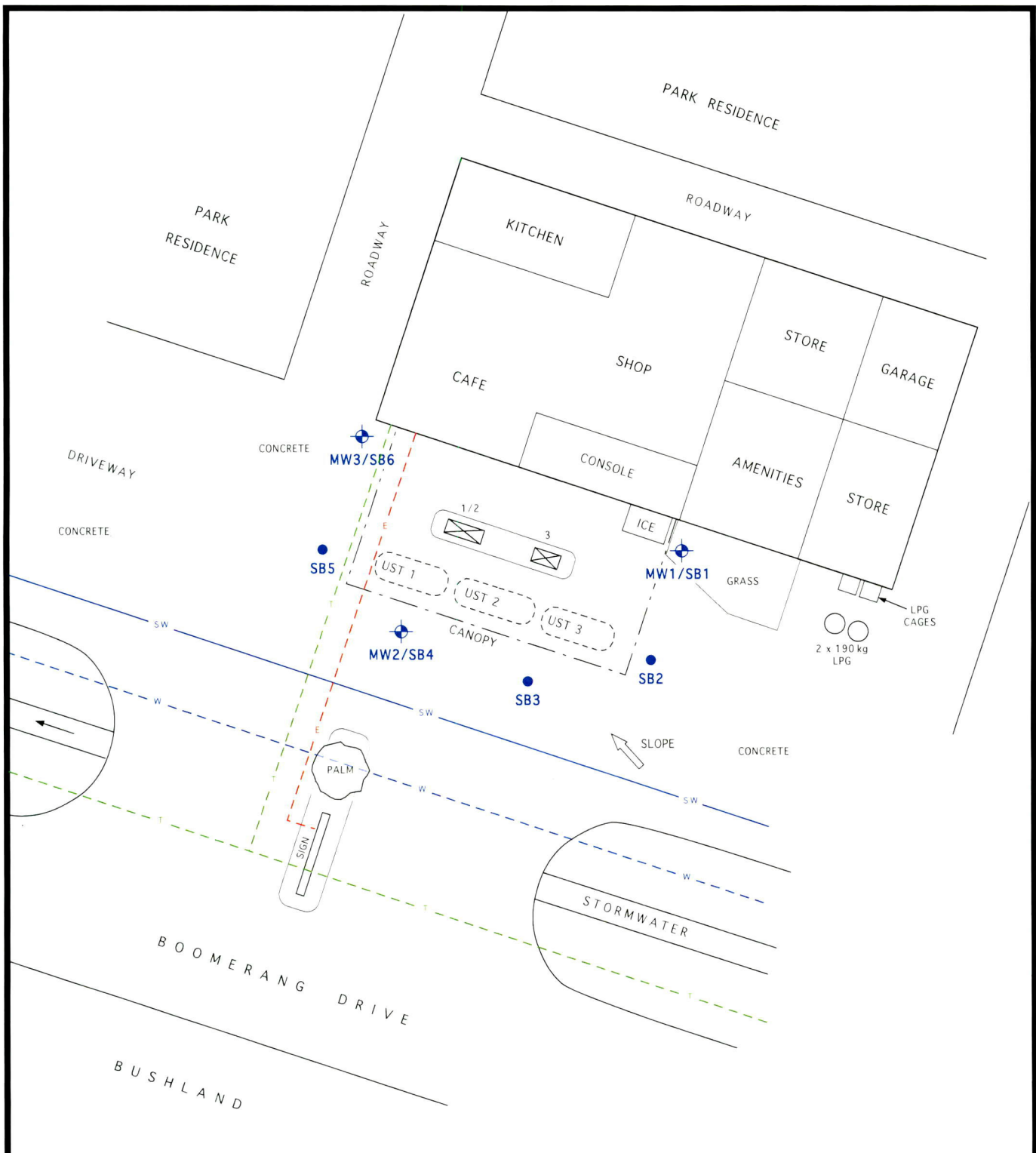
321 BOOMERANG DRIVE,
BLUEYS BEACH
MID COAST
239496-ESK-100



Central Coast Office: ph: (02) 4315 4334
 Hunter Office: ph: (02) 4976 5100
 Sydney Office: ph: (02) 9244 7411
www.adjohnson.com.au

rev	date	comment	drawn	pm	level information	scale (at original size)	notes
A	07/09/2018	INITIAL ISSUE	E.G.	K.H.	DATUM: N/A CONTOUR INTERVAL: N/A	SCALE 1:500 (MILLS)	

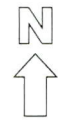
- project management
- civil engineering
- infrastructure
- superintendency
- economic analysis
- social impact
- town planning
- surveying
- development feasibility
- visualisation
- urban design



STORAGE TANKS		
UST 1	11.8 kL	PULP95
UST 2	16.2 kL	ULP91
UST 3	11.8 kL	ADF

- E — ELECTRICITY
- - W - - WATER
- SW — STORMWATER
- - T - - TELSTRA

- LEGEND**
- GROUNDWATER MONITORING WELL / SOIL BORE
 - SOIL BORE
 - UNDERGROUND STORAGE TANK
 - DISPENSER



DISPENSERS	
1	PULP95
2	ULP91
3	ADF

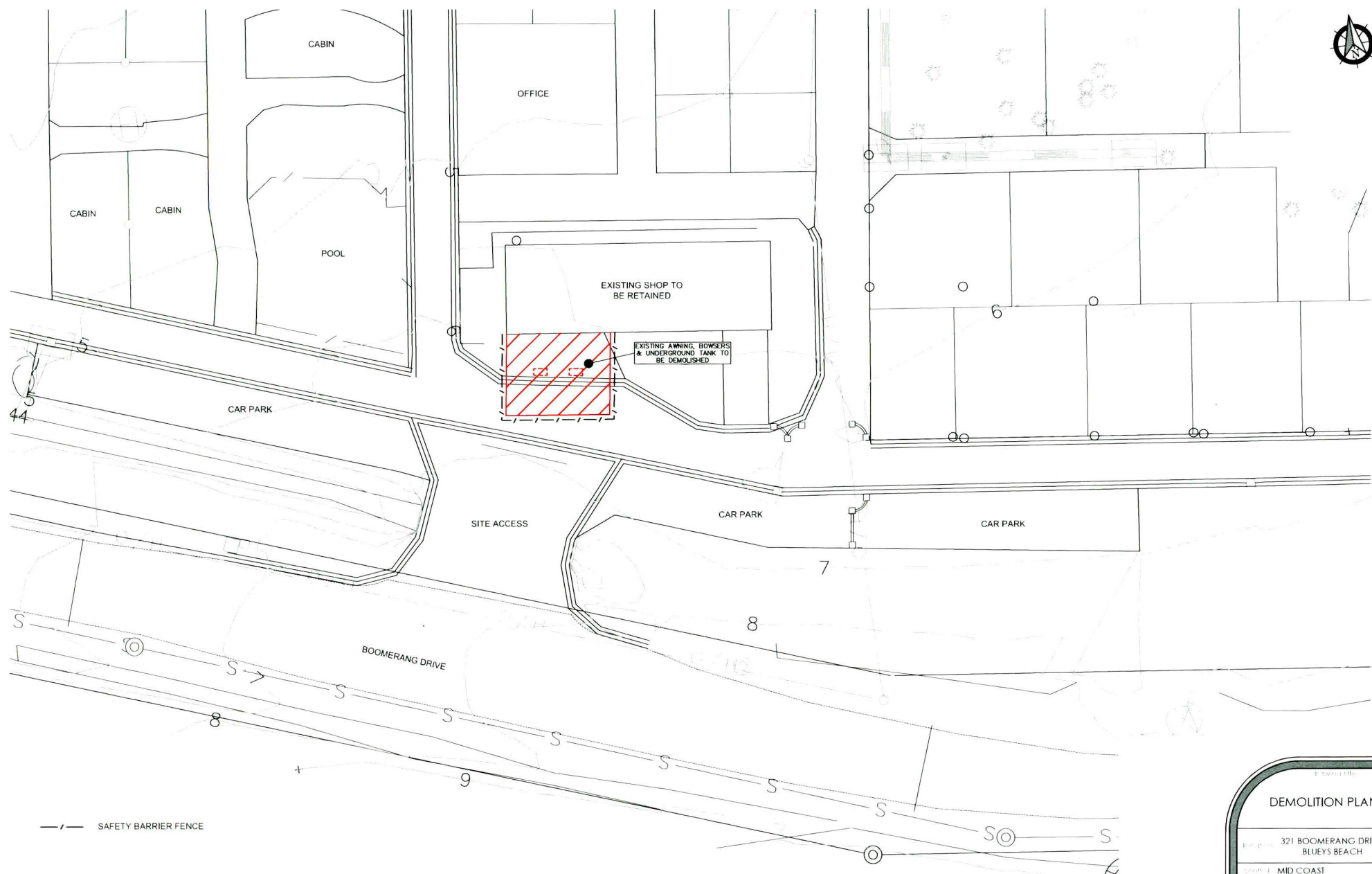
Aurora
ENVIRONMENTAL CONSULTING

PO Box 165 Newcastle NSW 2300
M: +61 438 233 779
E: tim@auroraenvironmentalconsulting.com.au

Palms Oasis Caravan Park, Pacific Palms NSW
Environmental Site Assessment - March 2016

SITE PLAN

CLIENT: INGENIA COMMUNITIES PTY LTD		LOCATION: 321 BOOMERANG DRIVE, PACIFIC PALMS, NSW	
DESIGNED: TB	DATE: 24.3.2016	PROJECT NO.:	FIGURE:
DRAWN: RC	REV. NO: A	P16021	2



PLAN
SCALE: 1:200

This plan includes coloured information. If you have a black and white copy you do not have all of the information. This note is coloured RED.

working beyond expectations

DEMOLITION PLAN

Location: 321 BOOMERANG DRIVE,
BLUEYS BEACH

Project: MID COAST

Project: 239496-ESK-101

ingenia

CCW
Johnson

central coast office ph: (02) 4305 4300
 hunter office ph: (02) 4976 5100
 sydney office ph: (02) 8546 7411

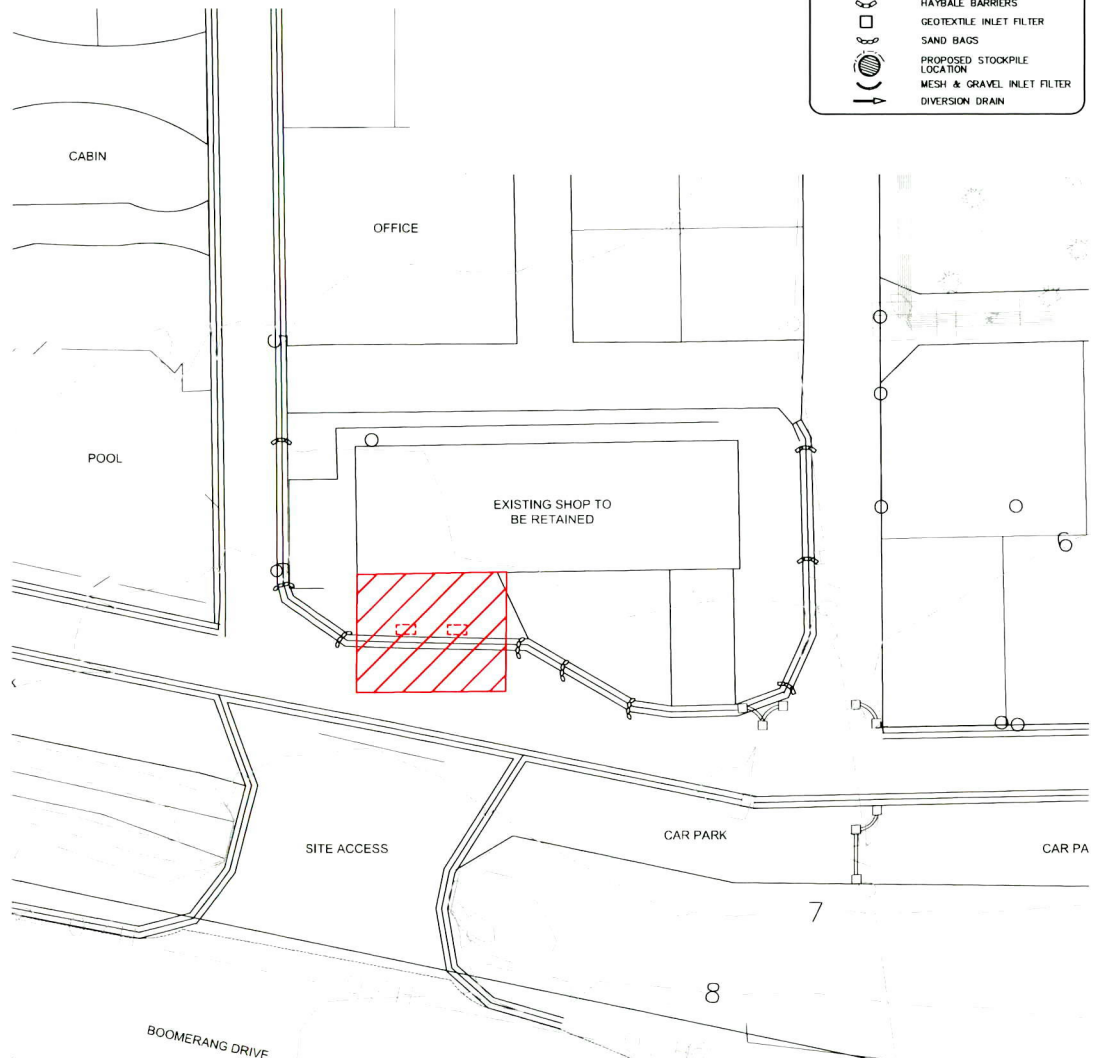
www.adwjohnson.com.au

ver	date	comment	drawn	pm	level information	scale (at original size)	notes
A	07/09/2018	INITIAL ISSUE	E.G	K.H	DATUM: N/A CONTOUR INTERVAL: 1/1A	<p>SCALE 1:200 (PLAN)</p>	



LEGEND

- SILT FENCE
- CONSTRUCTION ACCESS
- HAYBALE BARRIERS
- GEOTEXTILE INLET FILTER
- SAND BAGS
- PROPOSED STOCKPILE LOCATION
- MESH & GRAVEL INLET FILTER
- DIVERSION DRAIN



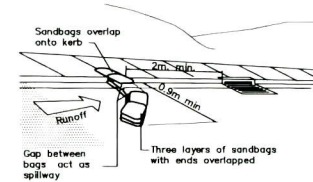
PLAN
SCALE 1:200

EROSION AND SEDIMENT CONTROL NOTES:

EROSION AND SEDIMENT CONTROLS THAT PREVENT DISPERSION OF CONTAMINATED SOIL SHALL BE IMPLEMENTED WHENEVER SOIL IS EXPOSED ON-SITE UNTIL THE SITE IS COMPLETELY COVERED/STABILISED OR REVEGETATED.

THE FOLLOWING EROSION AND SEDIMENT CONTROL MEASURES SHALL BE IMPLEMENTED IN THE FOLLOWING ORDER:

1. DIVERSION OF SURFACE WATER UPSLOPE OF THE EXCAVATION AND STOCKPILE AREAS.
2. STOCKPILE SOIL ON FLAT LAND WHERE POSSIBLE AND OUT OF ANY DRAINAGE LINES.
3. COVER STOCKPILED MATERIAL COMPLETELY TO PREVENT WIND- BLOWN DUST OR SEDIMENT RUNOFF DURING RAINFALL EVENTS.
4. INSTALL SEDIMENT FENCE DOWN SLOPE OF COMPLETELY COVERED SOIL STOCKPILES TO CAPTURE ANY RUNOFF.
5. INSPECT THE EROSION AND SEDIMENT CONTROLS WEEKLY, BEFORE AND IMMEDIATELY FOLLOWING RAIN EVENTS AND MAINTAIN CONTROLS AS REQUIRED.
6. INSPECT VEHICLE ACCESS POINT AFTER EACH VEHICLE LEAVES SITE AND REMOVE ANY MATERIAL TRACKED OFFSITE AND PLACE BACK ONSITE IN A LOCATION WHERE IT CANNOT CAUSE WATER POLLUTION.
7. THE CONTRACTOR IS TO KEEP THEMSELVES INFORMED OF WEATHER CONDITIONS AND THE POTENTIAL FOR RAIN EVENTS AND PROACTIVELY MANAGE THE SITE.
8. REFER TO THE NSW BLUE BOOK FOR DETAILS AND DIAGRAMS AT [HTTP://WWW.ENVIRONMENT.NSW.GOV.AU/RESOURCES/WATER/BLUEBOOKVOL1.PDF](http://www.environment.nsw.gov.au/resources/water/bluebookvol1.pdf)



SANDBAG KERB INLET SEDIMENT TRAP

This plan includes coloured information. If you have a black and white copy you do not have all of the information. This note is coloured RED.

REV	DATE	COMMENT	DRAWN	CHKD	LEVEL INFORMATION	SCALE (AT ORIGINAL SIZE)	NOTES
A	07.09.2018	INITIAL ISSUE	E.G.	K.H.	DATUM: N/A CONTOUR INTERVAL: 1/1A	SCALE 1:200 (MILLI)	

- project management
- civil engineering
- infrastructure
- superintendency
- economic analysis
- social impact
- town planning
- surveying
- development feasibility
- visualisation
- urban design

EROSION & SEDIMENT CONTROL PLAN

321 BOOMERANG DRIVE,
BLUEYS BEACH

MID COAST

239 496-ESK-102

Central coast office: ph: (02) 4302 4300
 Murrumbidgee office: ph: (02) 4978 5100
 Sydney office: ph: (02) 9546 7411

www.adjohnson.com.au

working beyond expectations