

DOs AND DON'Ts

Preparing your waste for collection

2
PILES

Sort it first. Metal/whitegoods in one pile; general/electronic waste in another

2
M³

Total load must fit into a standard (7'x4') box trailer, approx. 2 cubic metres

30
KG

Individual items must be manageable and not weigh more than 30kg



Tie loose items into a bundle or place them inside a sturdy box (no plastic bags)



Waste piles must not obstruct footpaths, roads or driveways



Place your waste out on the dates shown for your zone, no earlier

DO THE RIGHT THING

These requirements are in place for everyone's benefit and to keep our streets safe and tidy.

- Don't be the household that makes your street look like a tip
- Place only accepted items out for collection
- Don't place items out earlier than specified for your zone
- Remove items that are not collected

Items on the kerbside outside of the specified collection period are classed as illegal dumping and you could be fined.

PLACE WASTE OUT

on the dates shown for your zone

Zone 1: Saturday 26 - Sunday 27 February

(for collection 28 February - 8 March)

Hallidays Point, Diamond Beach, Black Head, Red Head, The Lakes Way to Pacific Hwy inc Rainbow Flat, Chelmsbrook Est, Koorainghat, Half Chain Rd (Sthn side of creek to Godfrey Hill Rd), Possum Brush, former Greater Taree City Council residents of Nabiac, Wang Wauk, Bunyah, Dyers Crossing, The Bucketts Way to the boundary at Belbora.

Zone 2: Monday 7 - Tuesday 8 March

(for collection 9 - 16 March)

Old Bar, Wallabi Point, Bohnock, Oxley & Mitchells Island, Manning Point, Glenthorne, Pampoolah, Half Chain Rd (Nthn side of creek to Old Bar Rd), Purfleet, Forest Downs Est, Tinonee, Tinonee Rd to Bight Bridge, Mondrook, Bootawa, Bull Hill Rd, Killawarra, Kimbriki, Burrell Creek, Dollys Flat, Karaak Flat, Mt George area up Nowendoc Rd to Rocks Crossing Reserve and side roads.

Zone 3: Tuesday 15 - Wednesday 16 March

(for collection 17 - 24 March)

Harrington, Crowdy Head, Moorland, Johns River, Hannam Vale, Waitui, Coopernook, Moto, Croki, Jones Island, Langley Vale, Lansdowne, Upper Lansdowne, Yarratt Rd, Lansdowne Rd including Melinga, Oakvale Rd, Clovernook Est, Kundle Kundle and Brimbin Rd to Taree Airport.

Zone 4: Wednesday 23 - Thursday 24 March

(for collection 25 - 31 March)

All of Cundletown Village, Dumaresq Island, Chatham (eastern side of railway line between racecourse and Browns Creek underpass and from the underpass to Crescent Ave).

Zone 5: Wednesday 30 - Thursday 31 March

(for collection 1 - 11 April)

Taree North to Wingham Rd (western side of railway line between the Racecourse and Browns Creek underpass and from the underpass to Victoria St), Taree, Taree Estate, Taree West, Wingham Rd to Bushland Dr and Bushland Estate.

Zone 6: Sunday 10 - Monday 11 April

(for collection 12 - 22 April)

Kolodong District, Wingham Rd from Bushland Dr to Wingham, Woola Rd, Cedar Party Rd full length and estates, Youngs Rd, Wingham township, Comboyne Rd to Killabakh, Strathcedar, Moorak Creek, Bulga Rd from Wingham to Bobin, Marlee, Wherrol Flat, Caparra and Elands.



MIDCOAST
council

2022 scrap metal and BULKY WASTE CLEAN-UP

MANNING REGION



ACCEPTED ITEMS

Scrap metal and white goods

All metal items will be recycled

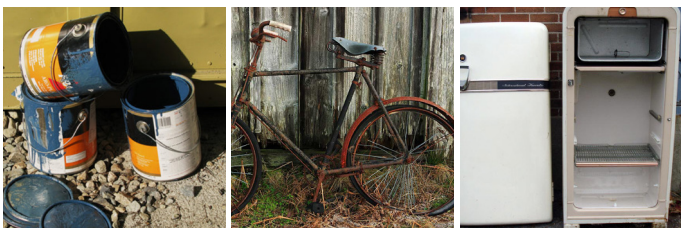
- Fridges* and washing machines*
- Microwaves*
- Metal push lawn mowers (no fuel or oil) and wheelbarrows
- Empty paint tins (lids removed)
- Stoves
- Clothes dryers*
- Barbecues
- Pushbikes
- Hot water systems (less than 260 litres)
- Metal furniture

* Doors must be removed from household appliances and whitegoods

General waste and electronic waste

All general bulky waste will be landfilled

- Eskies
- Furniture / chairs
- Bric-a-brac
- Lounges (that comply with size limit)
- Floor coverings
- Vacuum cleaners and small appliances
- Pottery and ceramics
- Tables
- Foam mattresses (no springs)
- e-Waste, including items such as computers, TV's, VCRs, stereos, copiers, faxes and mobile phones



UNACCEPTABLE ITEMS

The following materials will not be collected, and if placed out may mean your entire load is rejected. Items not collected must be removed from the kerb within 24 hours.

- Wire-spring mattresses and bed bases
- Oil heaters
- Commercial, trade, industrial or shop waste, eg. plumbing fixtures, water tanks and tiling
- Tyres, wrecked motor vehicles, motor vehicle parts and engines
- Building and demolition materials, concrete, bricks and panes of glass
- Household hazardous waste, eg. paint, asbestos, chemicals, old medicines
- Lengths of material longer than 1.8m (excluding lounges etc)
- Machinery containing fuel or oil
- Liquids of any sort including fuel and oil
- Batteries and gas bottles
- Recyclables collected in the yellow lidded bin, household garbage, and food scraps
- Garden organics, timber, grass clippings, soil and stones
- Treated timber, tree stumps, branches
- Glass, windows, glass sliding doors
- Fencing wire



DID YOU KNOW?

Free mattress drop-off during bulky waste collection

Two wire-spring mattresses (or one mattress and bed base) per household can be dropped for free at Taree Waste Management Centre between 28 February and 22 April 2022.

Free drop-off all year round

You can dispose of up to 20kg of problem household waste at our Community Recycling Centres for free at any time.

- Household quantities of paint and oil
- Gas bottles
- Batteries
- Smoke detectors
- Fluoro globes
- Fire extinguishers

ITEMS IN GOOD CONDITION

Imagine breathing new life into something you no longer need or want.

Before placing an item out for collection:

- Is it in working order or reasonable condition?
- Could it be re-used by someone else, or creatively repurposed?
- Could it be sold through a garage sale, or an online hub like Gumtree, Marketplace or Buy Swap Sell?



Re-imagine Waste is part of our commitment to reducing the amount of waste going to landfill.

UNSURE ABOUT AN ITEM?

Check with us before placing waste out. Visit www.midcoast.nsw.gov.au/bulkywaste or call 1300 290 763.