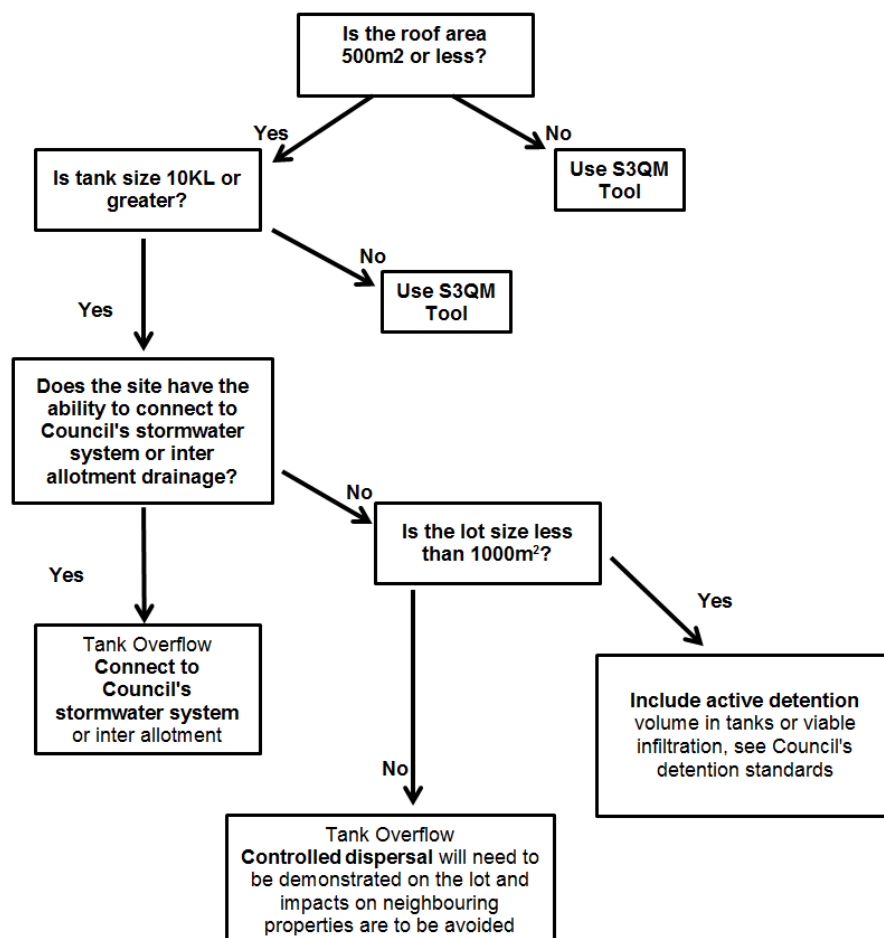


Water sensitive design guidance for single dwellings on un-serviced site

Background

Residential development on sites that do not have access to town water and are fully reliant on rainwater may be able to meet the water quality targets in Chapter 11 of the DCP if 100% of the roof area drains directly to the rainwater tank which supplies all indoor uses. The following decision tree can be applied to single dwellings and will help you work out how to meet the requirements.



Note: All other hard surfaces including (but not limited to) driveway, pathways, courtyards is required to sheet flow to landscaping with a 1-2% cross fall. For dual occupancies, the roof area and tank size in Figure 1 refers to the total roof area and tank size of both dwellings.

* The type of controlled dispersal will be site specific and need to avoid impact on neighbouring properties

Disclaimer

The material contained in this fact sheet is general information only. It should not be relied upon without discussing the specifics of your particular circumstance with an appropriate Council officer. This document is subject to change without notice.