

GENERAL NOTES

- PUBLIC GATES ARE TO BE INSTALLED IN ACCORDANCE WITH COUNCIL'S PUBLIC GATE POLICY, THE ROADS ACT 1993, THE ROADS REGULATION 2008, STANDARD DRAWING SD107 (THIS DRAWING) AND TO THE SATISFACTION OF COUNCIL'S SENIOR LEADER ASSET PLANNING.
- THESE PLANS ARE TO BE READ IN CONJUNCTION WITH COUNCIL'S PUBLIC GATE PERMIT APPLICATION FORM AND INFORMATION FOR APPLICANTS.
- THE PUBLIC GATE IS TO COMPRISE A STEEL STOCK GRID WITH SIDE-RAIL WINGS ON CONCRETE FOOTINGS AND AN ADJACENT GATE.
- A GATE 3.6 METRES MINIMUM WIDTH SHALL BE INSTALLED ADJACENT TO THE GRID. THE GRID SHALL BE POSITIONED ON THE CENTRELINE OF THE ROAD FORMATION.
- A NUMBER OF PREFABRICATED COMMERCIALY AVAILABLE STOCK GRIDS ARE ACCEPTABLE TO COUNCIL FOR INSTALLATION (REFER TO LIST BELOW). APPROVED GRIDS ARE TO BE INSTALLED IN ACCORDANCE WITH THE MANUFACTURERS SPECIFICATIONS, ROADS ACT 1993, ROADS REGULATION 2008, COUNCIL'S STANDARD DRAWING SD107 AND ANY ADDITIONAL CONDITIONS OF COUNCIL.
- WING POSTS & 2 RAILS (AS SHOWN) TO BE PROVIDED WITH PREFERRED STOCK GRID.
- G9-206 SIGNS (2x L & 2x R) SHALL BE ATTACHED TO THE APPROACH SIDES OF ALL WINGS AS SHOWN.
- R9-202A PUBLIC GATE No. ... SIGNS (2x) SHALL BE FIXED TO BOTH SIDES OF THE GATE.
- W5-16A GRID SIGNS (2x) SHALL BE INSTALLED ON BOTH APPROACHES AT 80m TO 100m FROM THE GRID. SIGHT DISTANCE SHALL BE 50m FROM THE APPROACH TO THIS SIGN.
- R9-9A ONE LANE SIGNS (2x) SHALL BE INSTALLED BENEATH THE W5-16A SIGNS FOR ALL GRIDS INSTALLED ON CATEGORY 1 & 2 ROADS.
- A PUBLIC GATE PERMIT SHALL BE ISSUED TO THE APPLICANT FOLLOWING COUNCIL INSPECTION OF A SATISFACTORY PUBLIC GATE INSTALLATION.
- IT SHALL BE THE RESPONSIBILITY OF THE PERMIT HOLDER TO MAINTAIN THE PUBLIC GATE INSTALLATION TO THE SATISFACTION OF COUNCIL.

COUNCIL APPROVED GRIDS :

CATEGORY 1 & 2 ROADS

BENNETT'S STEEL 4.2m STEEL GRID, (IN-SITU OR PRE-FAB CONCRETE STRIP FOOTINGS REQUIRED)

METALCORP HIGHWAY 4.2m STEEL GRID, (IN-SITU OR PRE-FAB CONCRETE STRIP FOOTINGS REQUIRED)

APRILLA S13DMR 4.06m PRE-CAST CONCRETE & STEEL GRID, INCL. TYPE A SIDES

MONIER ROCLA HIGHWAY 4.0m PRE-CAST CONCRETE & STEEL GRID, INCL. MESH TYPE SIDES

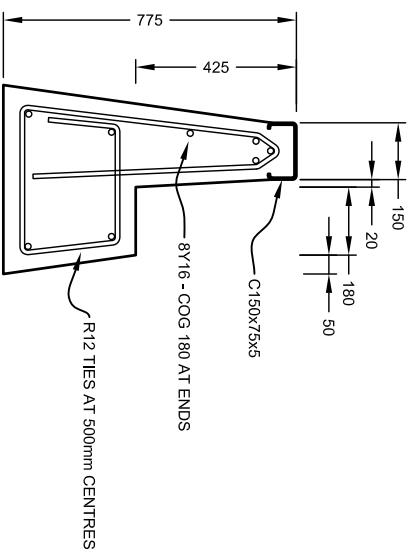
CATEGORY 3, 4 & 5 ROADS

BENNETT'S STEEL 8.4m STEEL GRID, (IN-SITU OR PRE-FAB CONCRETE STRIP FOOTINGS REQUIRED)

METALCORP HIGHWAY 8.4m STEEL GRID, (IN-SITU OR PRE-FAB CONCRETE STRIP FOOTINGS REQUIRED)

APRILLA S13DMR 8.12m PRE-CAST CONCRETE & STEEL GRID, INCLUDING DOUBLE GRID JOINER & TYPE A SIDES

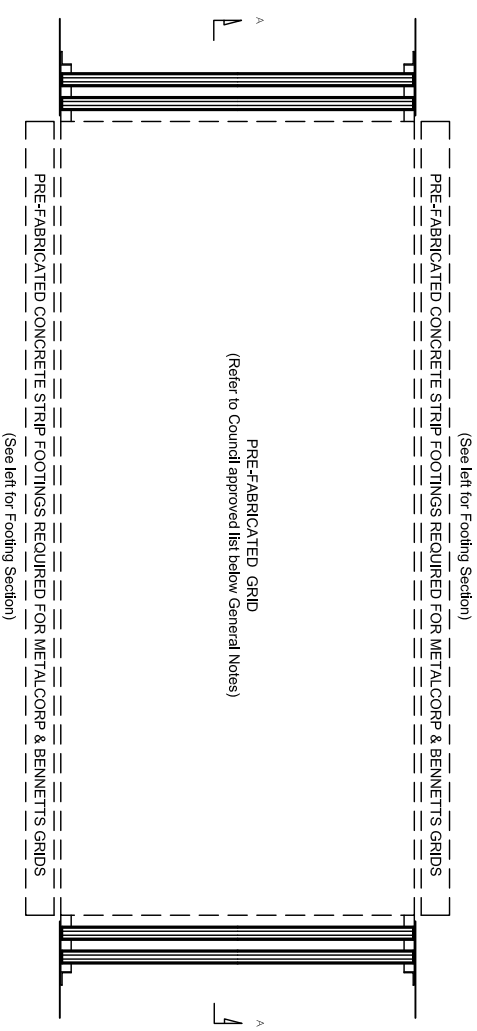
MONIER ROCLA HIGHWAY 8.17m PRE-CAST CONCRETE & STEEL GRID, INCLUDING DOUBLE GRID JOINER & MESH TYPE SIDES



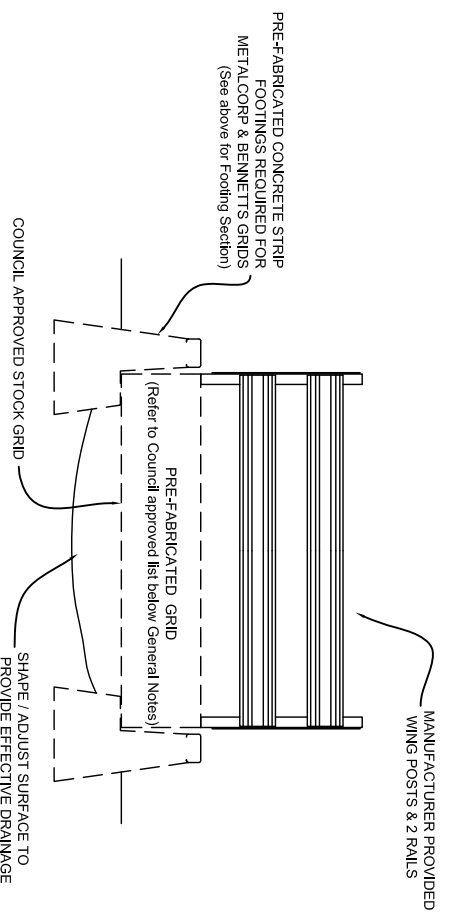
NOTE: PREFABRICATED CONCRETE STRIP FOOTINGS REQUIRED FOR METALCORP & BENNETT'S GRIDS
Overall length: 4.20 metres

STRIP FOOTING - SECTION

1 : 20

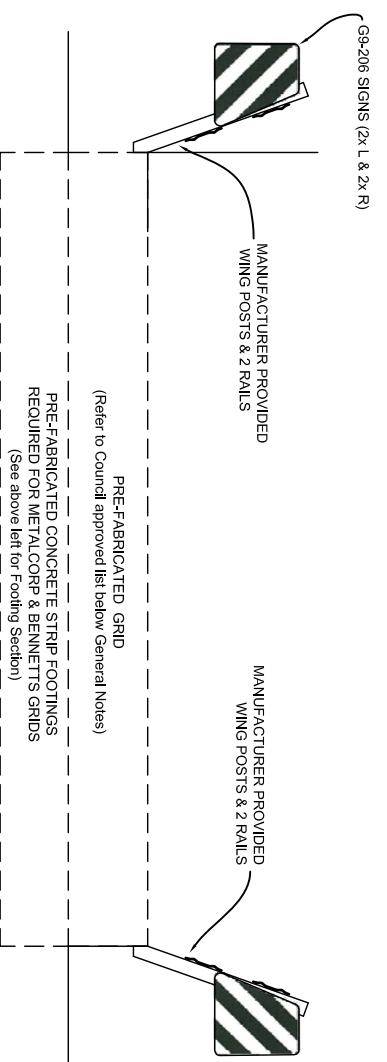


PLAN



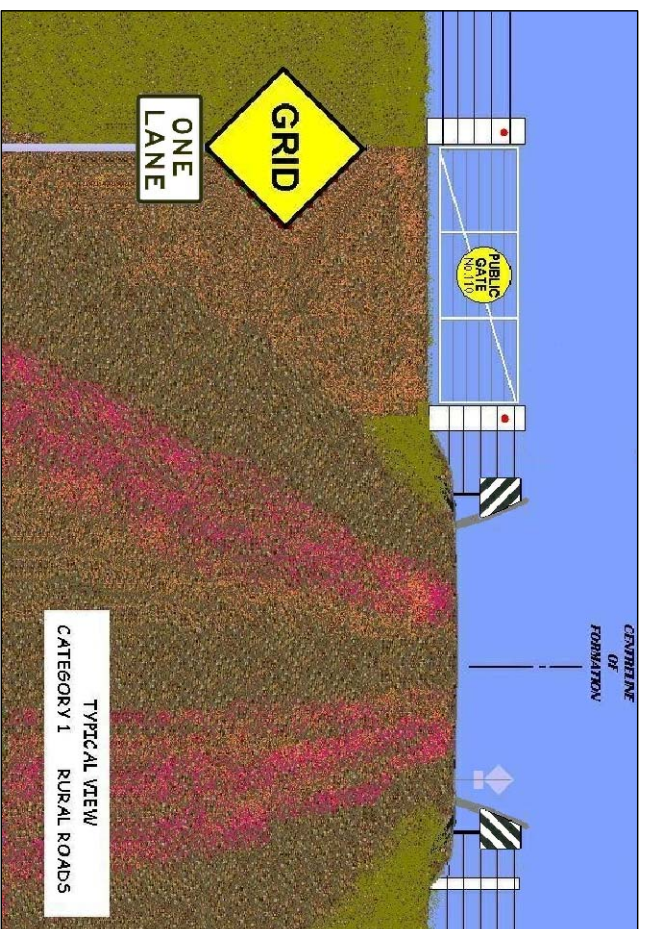
PART SECTION B-B

NTS



PART SECTION A-A

NTS



TYPICAL VIEW
CATEGORY 1 RURAL ROADS

SCALES

2 PILL TENNEY ST
PO BOX 482
TAREE NSW 2430
AUSTRALIA

T 02 6592 5399
F 02 6592 5311
E gcalin@greentreecity.gov.au
W www.greentreecity.gov.au
ABN 45 651 487 802



A1 ORIGINAL
DO NOT SCALE
USE PROVIDED DIMENSIONS ONLY
VERIFY ALL DIMENSIONS ON SITE
THIS DRAWING MUST NOT BE USED
FOR CONSTRUCTION UNLESS
SIGNED AS APPROVED & STAMPED
FOR CONSTRUCTION

CONSULTANT

CONSULTANTS REF: GTC/IDS: 99/01

DRAWN	DESIGNED	DATE
RL	Vandus	
DRAWING CHECK GC	DESIGN CHECK GC	DATE
APPROVED	APPROVED	
G Calin, TL Investigation & Design APPROVED FOR AND ON BEHALF OF GREENTREE CITY COUNCIL		
12/8/2015		
SIGNED		

STANDARD DRAWING
PUBLIC GATES
STOCK GRID & GATE FOR ROAD
CATEGORIES 1 to 5

REV.	SHEET No.	No OF SHEETS	PLANNING
	1	1	SD107