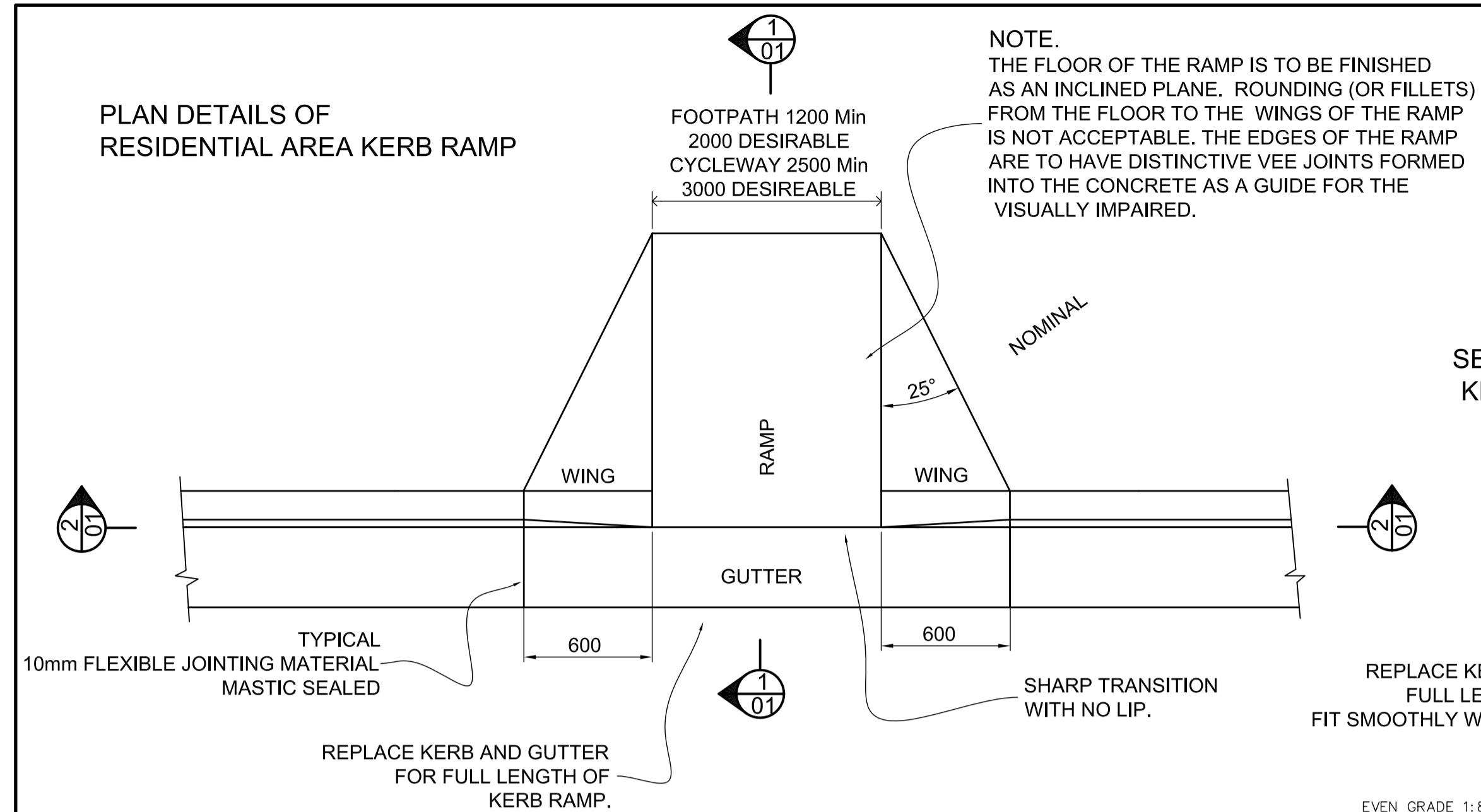
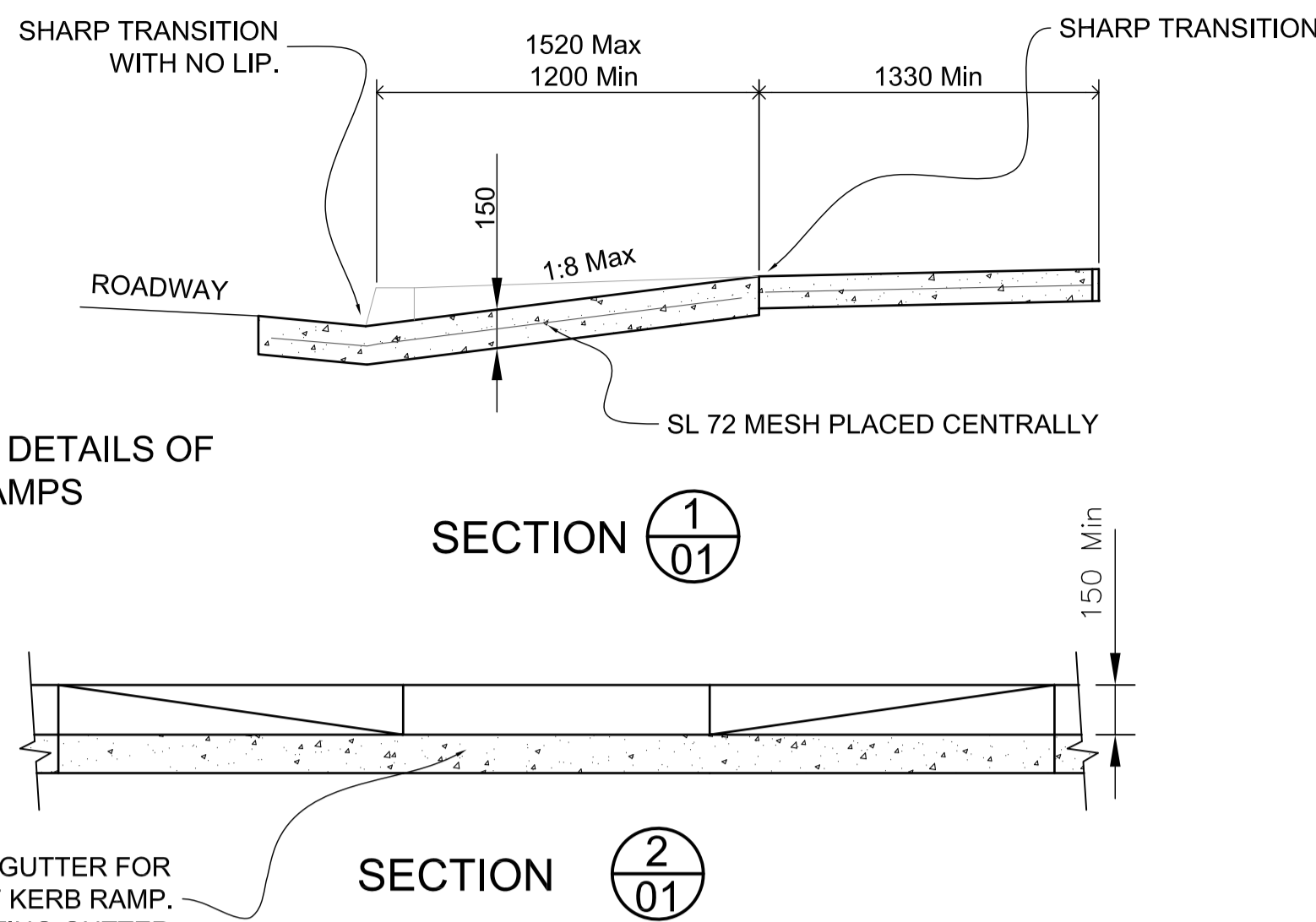


**PLAN DETAILS OF RESIDENTIAL AREA KERB RAMP**

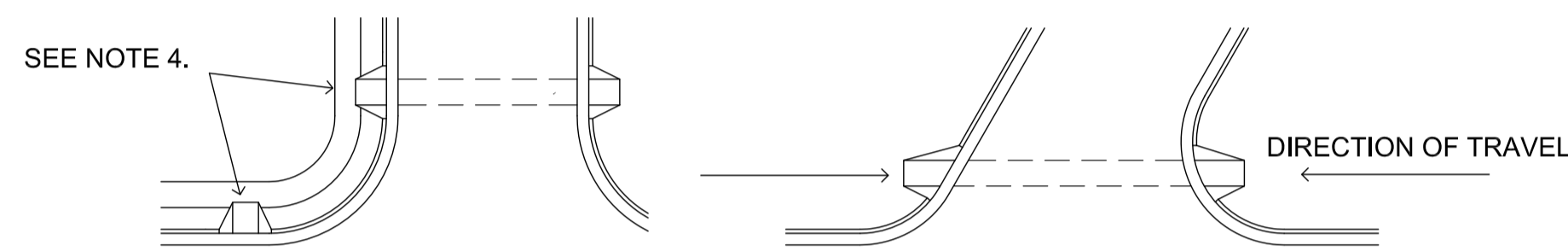


**SECTION DETAILS OF KERB RAMPS**

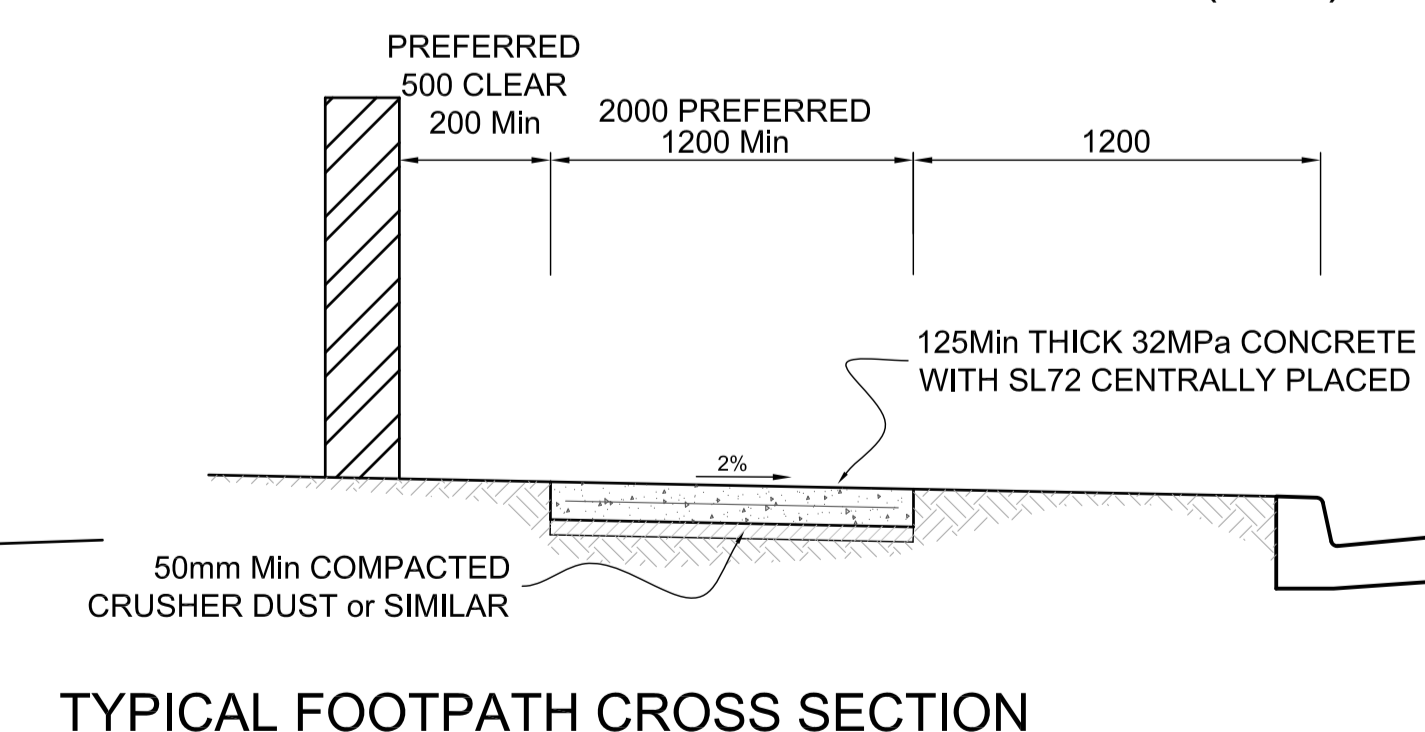
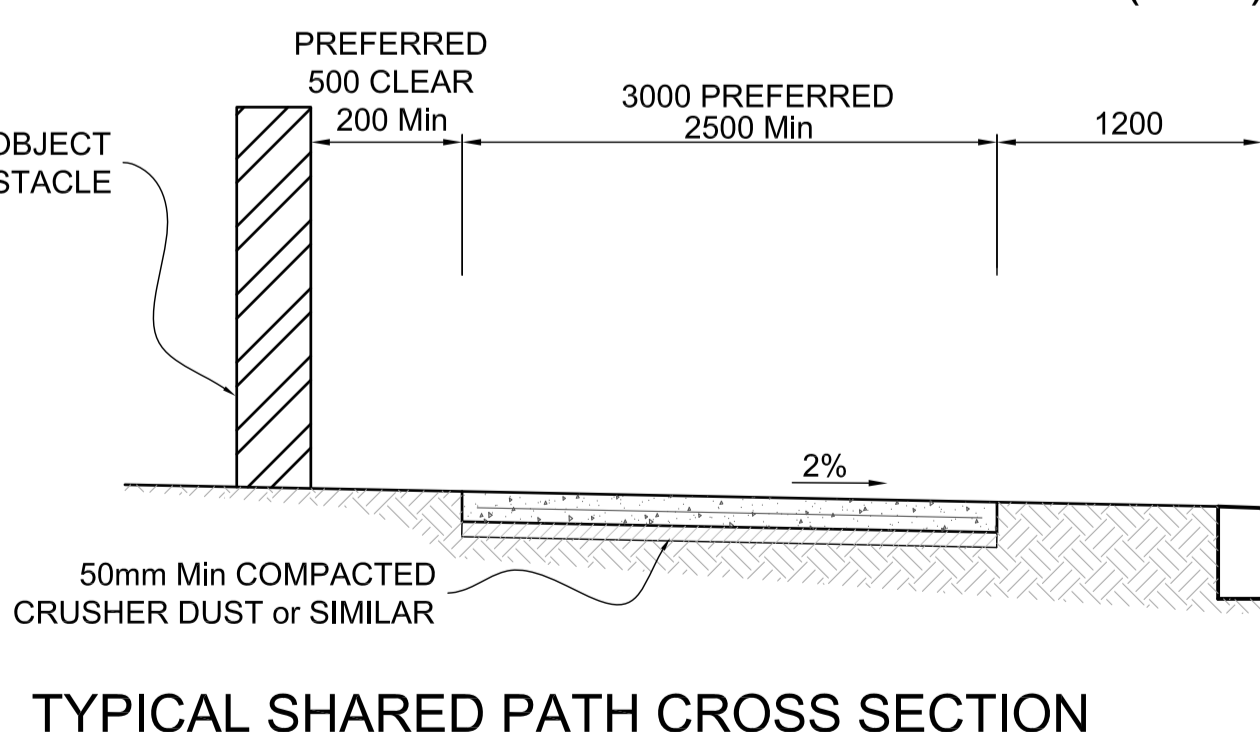
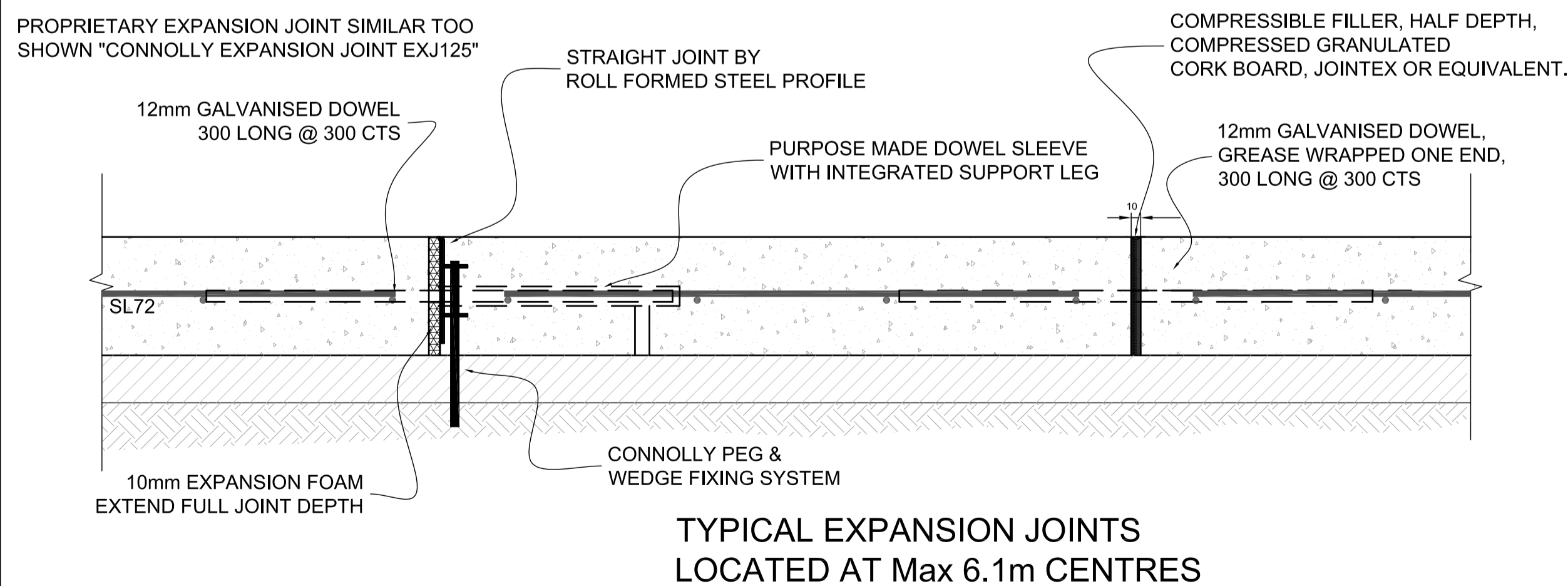
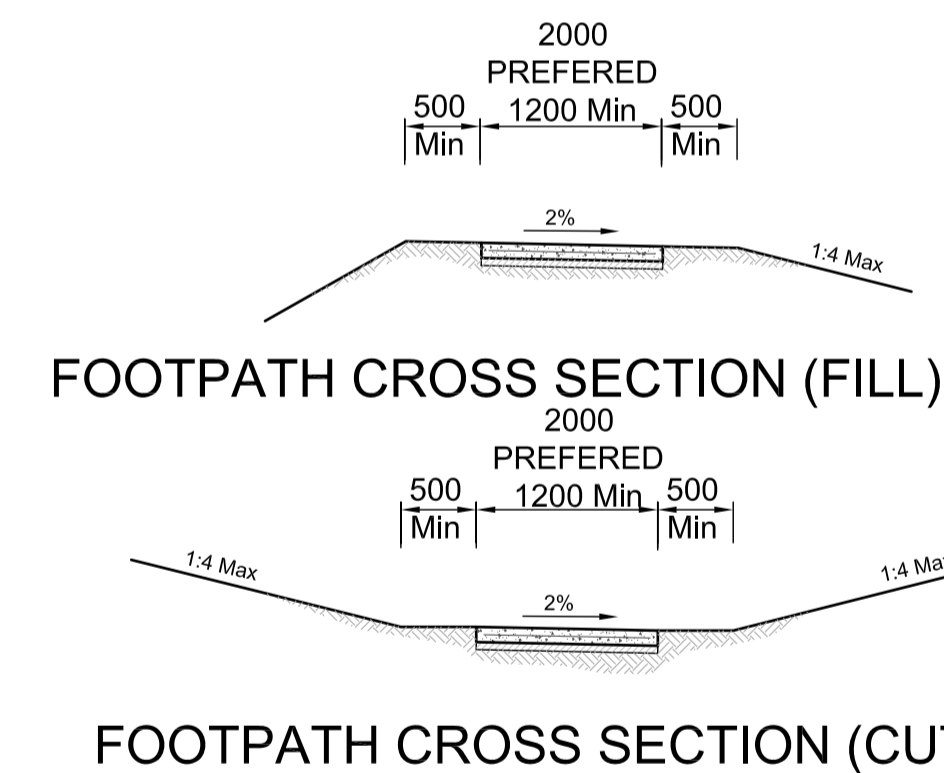
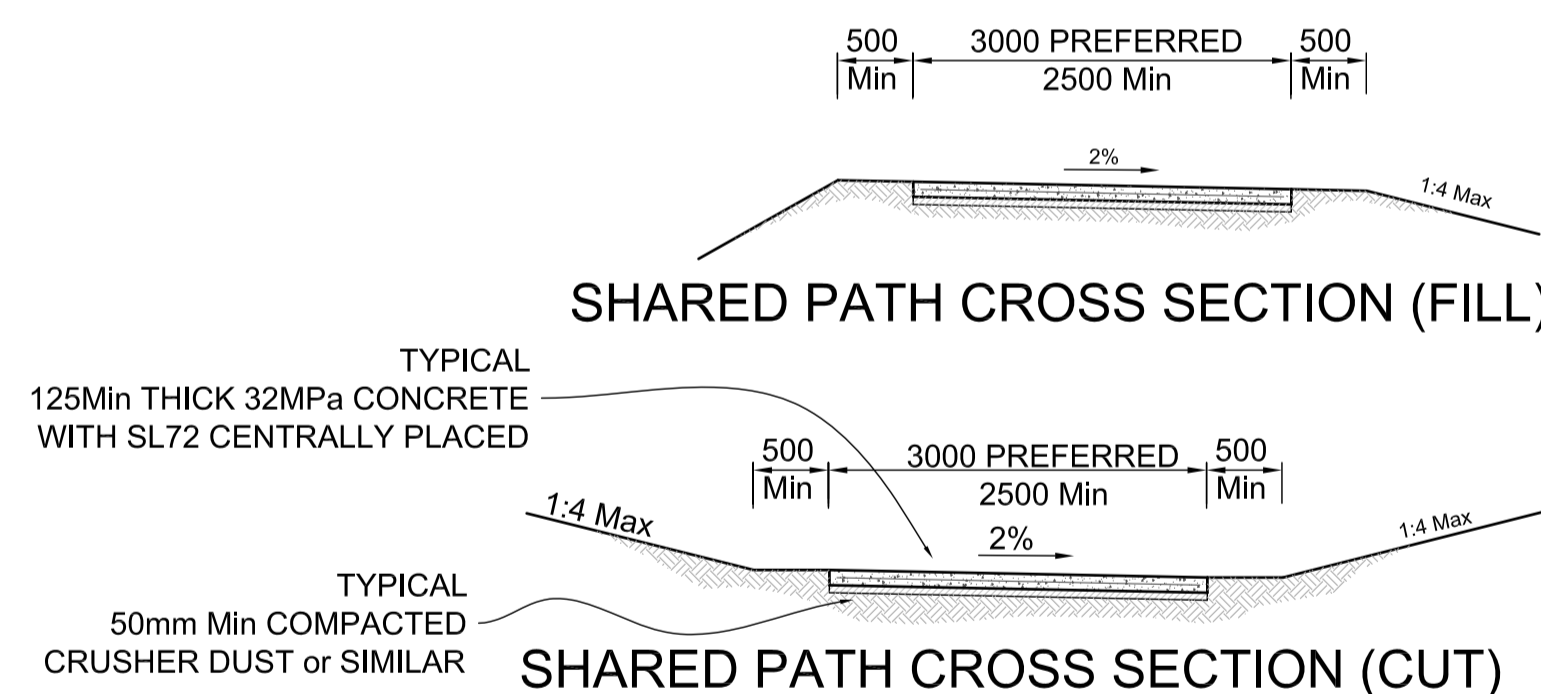
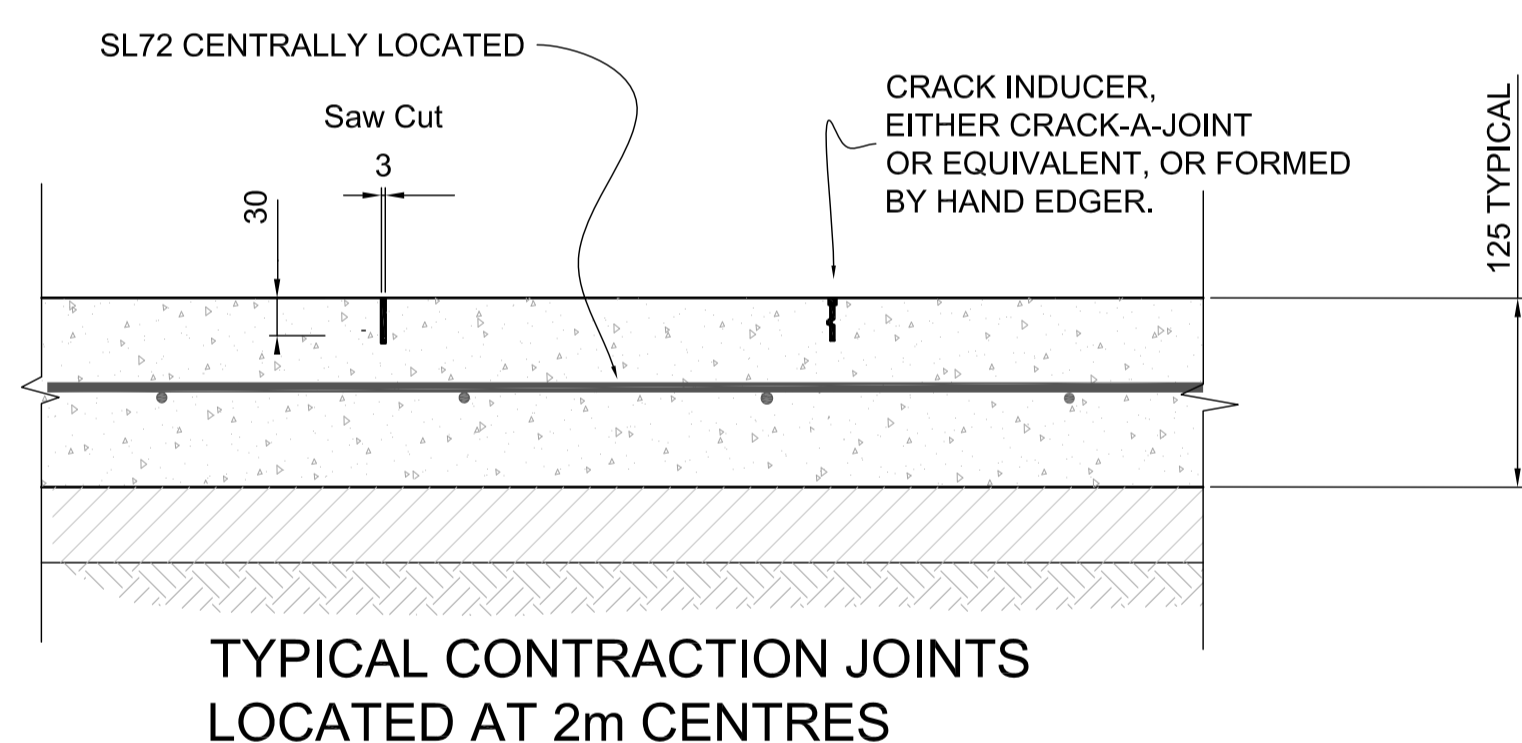
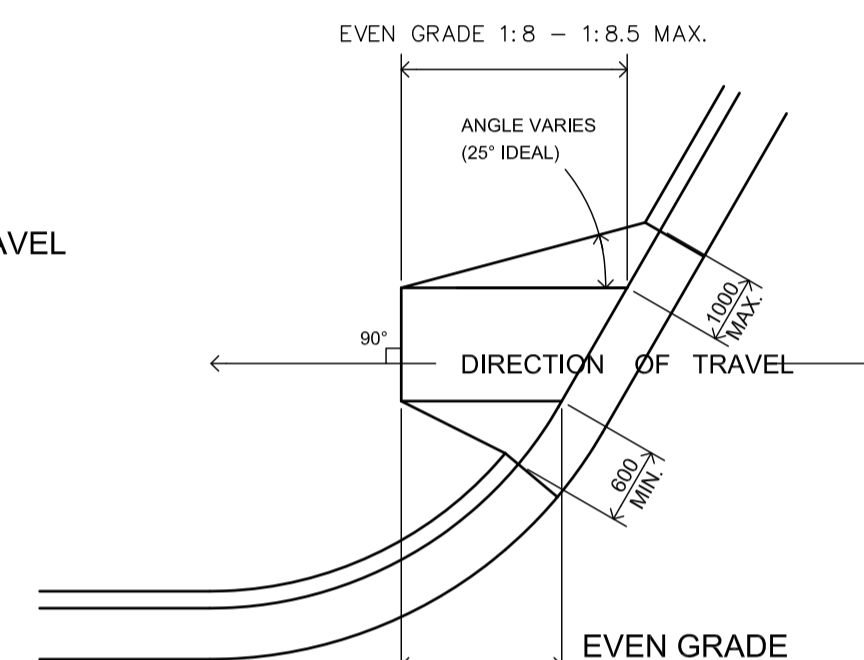


**NOTES**

1. CONCRETE STRENGTH TO BE 32MPa AT 28 DAYS WITH ALL EDGES SHAPED WITH AN EDGING TOOL. SURFACE SHALL BE A NON-SLIP TROWEL OR BROOM FINISH.
2. ALL REINFORCING IN ACCORDANCE WITH AS 3600. ALL REINFORCEMENT TO HAVE 50mm CLEAR COVER. CONTINUOUS PERIMETER BAR (PART OF SL72 MESH OR ADDITIONAL) SHALL BE PROVIDED ON ALL SLAB EDGES WITH 100mm MAX CLEAR COVER. ALSO NOTE ADDITIONAL CORNER CRACK CONTROL MAY BE REQUIRED AT ACUTE ANGLES AS APPROVED BY GTCC.
3. CONSTRUCTION SHALL BE IN ACCORDANCE WITH GTCC AUS-SPEC.( C271 - MINOR CONCRETE WORK.)
4. PROVIDE EXPANSION JOINTS AT A 4m Min & 6.1m Max CENTRES. EXPANSION JOINTS TO BE INSTALLED AT CONNECTIONS TO STRUCTURES AND BOTH SIDES OF VEHICLE CROSSINGS.
5. PROVIDE CONTRACTION JOINTS AT Max 2m CENTRES
6. MAKE GOOD SMOOTH CONNECTION TO EXISTING DRIVEWAYS PATHS & ROADWAYS. ROUND ALL EDGES.
7. FOOTPATHS AND CYCLEWAYS SHALL HAVE A DESIRABLE 2% CROSSFALL, MAX. 2.5% CROSSFALL
8. CONTACT DIAL 1100 BEFORE YOU DIG BEFORE COMMENCING ANY WORKS.
9. ALL STEEL REINFORCEMENT TO BE PLACED ON CHAIRS TO ENSURE Min COVER IS ACHIEVED.
10. ALL KERB RAMPS ARE TO BE ALIGNED WITH THE DESIRED DIRECTION OF PEDESTRIAN TRAVEL AND ARE TO BE A MINIMUM OF 1200mm WIDE.
11. AT PEDESTRIAN CROSSINGS AND MARKED FOOTWAY CROSSINGS, RAMPS MUST LINE UP WITH CROSSING AND CORRESPONDING CROSSING ON THE OTHER SIDE OF THE ROAD.
12. AT INTERSECTIONS SEPARATE KERB RAMPS MUST BE INSTALLED FOR EACH DIRECTION OF PEDESTRIAN TRAVEL.
13. REFER TO AS1428.4 FOR ALIGNMENT OF KERB RAMPS AT INTERSECTIONS.
14. WHERE ROAD GEOMETRY OR OTHER OBSTRUCTIONS PRECLUDE THE RAMP BEING CONSTRUCTED TO THE FULL WIDTH OF THE INTENDED CROSSING, THE RAMP MAY BE REDUCED TO A MINIMUM WIDTH OF 1200mm.
15. THE SLOPING FACE OF A KERB RAMP SHOULD BE CONSTRUCTED TO THE FULL WIDTH OF CROSSING WHEN INSTALLED AT CHILDREN'S CROSSINGS, PEDESTRIAN CROSSINGS AND MARKED FOOT CROSSINGS. REFER TO AUSTRROADS (PART 13 - PEDESTRIANS) FOR WIDTHS OF ALL CROSSINGS.
16. EXPANSION JOINTS ARE TO BE PROVIDED WHERE ENDS OF KERB RAMP ABUT KERB & GUTTER.
17. IF THIS STANDARD CANNOT BE ACHIEVED DUE TO SITE CONDITIONS, THE MATTER SHALL BE REFERRED TO COUNCIL.
18. TACTILE INDICATORS ARE TO BE PLACED IN ACCORDANCE WITH AS1428-4, AS DIRECTED BY THE ENGINEER.
19. IN COMMERCIAL AREAS ANGLE OF WINGS MAY BE INCREASED TO 45° WHERE SPACE PERMITS TO PROVIDE MULTI-DIRECTIONAL ACCESS TO THE RAMP. DESIGNER TO LIAISE COUNCIL ENGINEER.



ALIGN KERB RAMPS IN THE DIRECTION OF PEDESTRIAN TRAVEL.



FOR CONSTRUCTION ISSUE

REV	DATE	DESCRIPTION	DRAWN	CHECK	DESIGN	APPROVED

SCALES	



A1 ORIGINAL  
DO NOT SCALE  
USE FIGURED DIMENSIONS ONLY  
VERIFY ALL DIMENSIONS ON SITE  
THIS DRAWING MUST NOT BE USED FOR CONSTRUCTION UNLESS SIGNED AS APPROVED & STAMPED "FOR CONSTRUCTION"

CONSULTANT  
CONSULTANT REFERENCE No.

DRAWN GC BBS  
DESIGNED GC BH GS  
DRAFTING CHECK GC  
DESIGN CHECK GS GC  
APPROVED Grant Calvin  
APPROVED FOR AND ON BEHALF OF GREATER TAREE CITY COUNCIL  
August 14, 2014

STANDARD DRAWING  
FOOTPATHS & CYCLEWAYS  
PLAN SHOWING FOOTPATH AND CYCLEWAY SECTION DETAILS AND PEDESTRIAN RAMP INSTALLATION  
PLAN AND SECTIONS

REV.	SHEET No.	No OF SHEETS	PLAN No.
	1	1	SD 103