

COMMUNITY SPACES AND SERVICES

ATTACHMENT C

FOOTPATH ACTIVITIES IN TOWN CENTRES

STRATEGIC MEETING

14 FEBRUARY 2018

Name of policy:	Footpath activities in town centre		
Policy code:			
Adoption by Council:	28 June 2017	Minute number:	111/17
Last review date:	June 2017		
Review timeframe:	3 years		
Next scheduled review date:	June 2020		
Related legislation:	Local Government Act 1993		
Association policies/documents:			
Responsible division:	Community Spaces & Services		

Policy Objective

The objective of this policy is to make town centres across the MidCoast Council area attractive and vibrant.

Policy Statement

Council is committed to improving the local economy by encouraging the use of footpaths in town centres in order to contribute to their attractiveness and vibrancy while maintaining community access and safety.

Coverage of the Policy Statement

- There are a range of footpath activities that apply to this policy that have been grouped as follows:
 - **business uses** – uses that are directly associated with a business that operates in the town centre. Typically the items are placed on the footpath in front of the business, but can be extended along the footpath if the neighbours agree. Items include tables and chairs for outdoor dining, displays, banners, seats, potted plants and art. These items will be removed from the street when the business is closed;
 - **community stalls** – these are temporary uses that are typically undertaken by not-for-profit groups to either increase awareness or raise funds by selling goods;
 - **buskers** – who provide entertainment for people using the footpath; and
 - **temporary stalls** – temporary stalls to provide a service not currently available in the centre such as flowers, newspapers, fresh fruit or market produce.
- This policy only applies to the business zones in the town centres of Taree, Wingham, Old Bar, Harrington, Bulahdelah, Gloucester, Tea Gardens, Hawks Nest, Pacific Palms and Stroud as shown on Maps 1-10.

Policy Content

Footpaths are public spaces that adjoin our roads. Often businesses or community groups seek to use the footpath for activities such as outdoor dining, displaying goods and signage. These uses are specifically encouraged in town centres to make them attractive and vibrant and to encourage economic growth and activity.

Part of making town centres attractive and vibrant is also ensuring that community access and safety are maintained when using the footpath. These outcomes will be achieved by businesses meeting the following criteria:

- applying a 'common sense' approach when placing anything on the footpath to ensure that the community can use the footpath safely;
- working with neighbouring businesses to attract people to the streets and ensure that their use of the footpath does not compromise their neighbours' business;
- being responsible for the footpath by being the first stop for people with compliments and criticism, and holding public liability insurance to cover the use of the footpath (minimum of \$20 million liability); and
- completing an on-line application form.

If each of the criteria above are met, no formal approval is required to use the footpath.

References and Related Documents

Nil

Responsible Officer

Manager Growth, Economic Development and Tourism

Attachments

Maps of land to which this policy applies

Bulahdelah



This map was produced by Mid-Coast Council using information available from NSW Spatial Services.
Mid-Coast Council accepts no responsibility either in contract or tort (or particularly in negligence) for any errors, omissions or inaccuracies whatsoever contained within or arising from this map.
©Mid-Coast Council 2016
©NSW Spatial Services 2016

Gloucester



This map was produced by Mid-Coast Council using information available from NSW Spatial Services.
Mid-Coast Council accepts no responsibility either in contract or tort (or particularly in negligence) for any errors, omissions or inaccuracies whatsoever contained within or arising from this map.
©Mid-Coast Council 2016
©NSW Spatial Services 2016



Tea Gardens



This map was produced by Mid-Coast Council using information available from NSW Spatial Services. Mid-Coast Council accepts no responsibility either in contract or tort (or particularly in negligence) for any errors, omissions or inaccuracies whatsoever contained within or arising from this map.
©Mid-Coast Council 2016
©NSW Spatial Services 2016

Hawks Nest



This map was produced by Mid-Coast Council using information available from NSW Spatial Services.
Mid-Coast Council accepts no responsibility either in contract or tort (or particularly in negligence) for any errors, omissions or inaccuracies whatsoever contained within or arising from this map.
©Mid-Coast Council 2016
©NSW Spatial Services 2016



Charlotte Bay



Pacific Palms

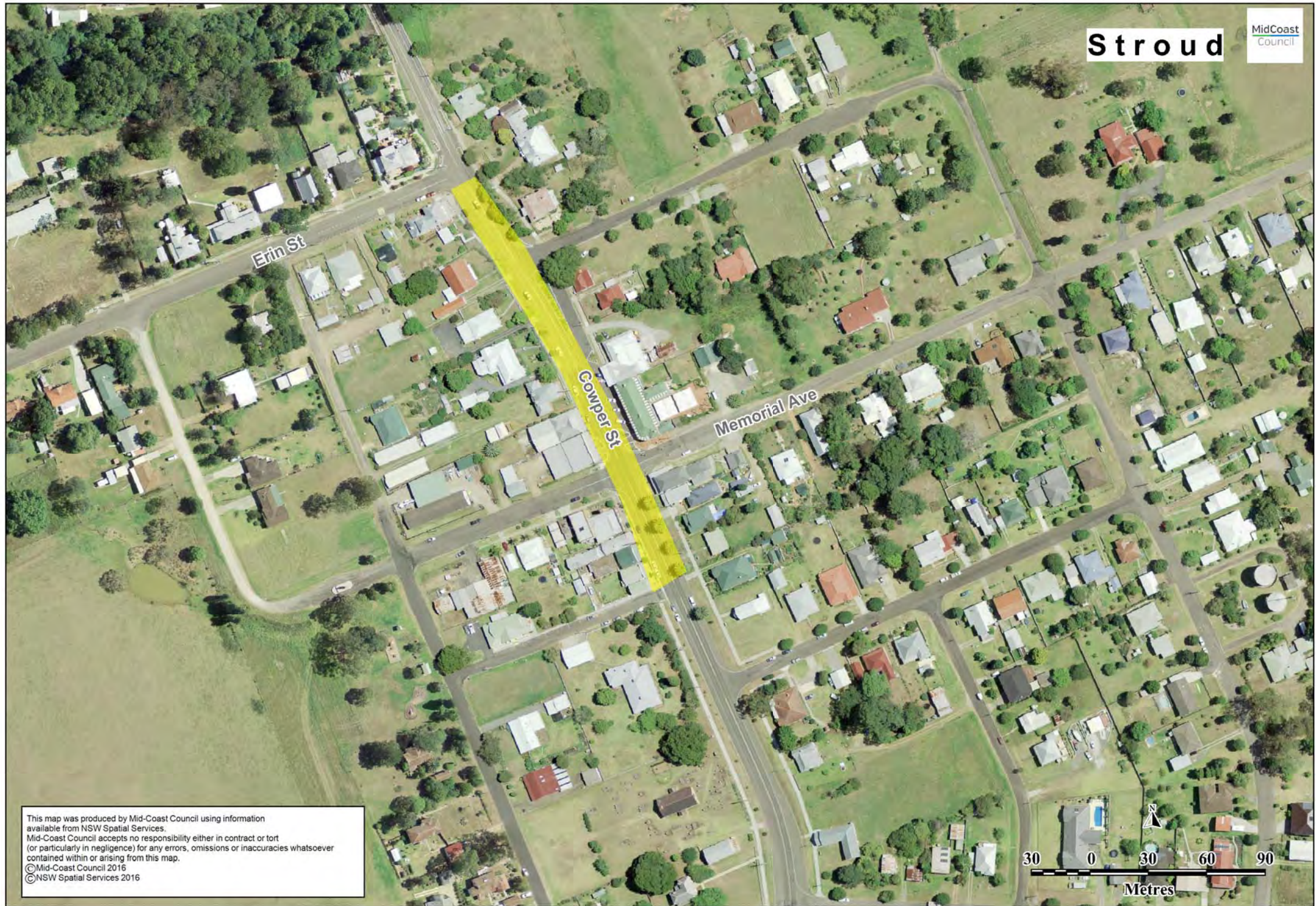
MidCoast Council



This map was produced by Mid-Coast Council using information available from NSW Spatial Services.
 Mid-Coast Council accepts no responsibility either in contract or tort (or particularly in negligence) for any errors, omissions or inaccuracies whatsoever contained within or arising from this map.
 ©Mid-Coast Council 2016
 ©NSW Spatial Services 2016

Stroud

MidCoast
Council



This map was produced by Mid-Coast Council using information available from NSW Spatial Services.
Mid-Coast Council accepts no responsibility either in contract or tort (or particularly in negligence) for any errors, omissions or inaccuracies whatsoever contained within or arising from this map.
©Mid-Coast Council 2016
©NSW Spatial Services 2016

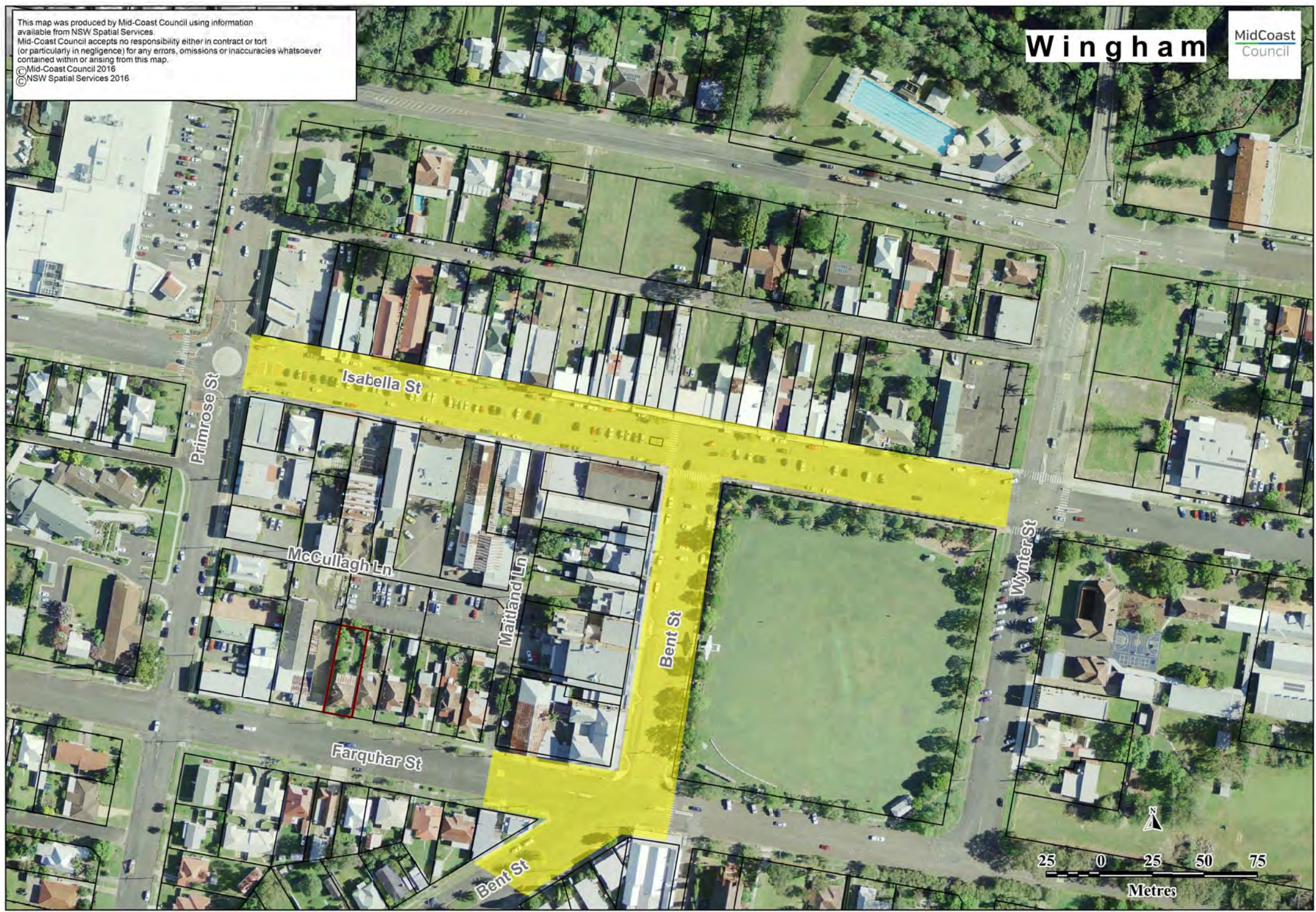
This map was produced by Mid-Coast Council using information available from NSW Spatial Services. Mid-Coast Council accepts no responsibility either in contract or tort (or particularly in negligence) for any errors, omissions or inaccuracies whatsoever contained within or arising from this map.
© Mid-Coast Council 2016
© NSW Spatial Services 2016

Taree



This map was produced by Mid-Coast Council using information available from NSW Spatial Services. Mid-Coast Council accepts no responsibility either in contract or tort (or particularly in negligence) for any errors, omissions or inaccuracies whatsoever contained within or arising from this map.
© Mid-Coast Council 2016
© NSW Spatial Services 2016

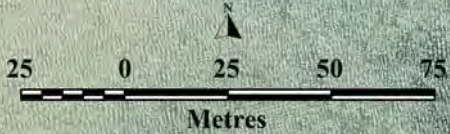
Wingham



This map was produced by Mid-Coast Council using information available from NSW Spatial Services. Mid-Coast Council accepts no responsibility either in contract or tort (or particularly in negligence) for any errors, omissions or inaccuracies whatsoever contained within or arising from this map.
© Mid-Coast Council 2016
© NSW Spatial Services 2016

Harrington

MidCoast Council



This map was produced by Mid-Coast Council using information available from NSW Spatial Services. Mid-Coast Council accepts no responsibility either in contract or tort (or particularly in negligence) for any errors, omissions or inaccuracies whatsoever contained within or arising from this map.
© Mid-Coast Council 2016
© NSW Spatial Services 2016

Old Bar

