

PLANNING & NATURAL SYSTEMS

ATTACHMENT A

**DA 81/2016 - SECTION 96 MODIFICATION -
ADDITIONAL TUNNEL VENTILATED POULTRY
SHED**

DEVELOPMENT CONTROL UNIT MEETING

18 JANUARY 2017

MARK	M.G.A. CO-ORDINATES		R.L. (A.H.D.)	CLASS	ORDER	VERT. ACC.	METHOD
	EASTING	NORTHING					
PM 143097	423 538.536	6 417 042.509	9.260	A	1	2	GNSS SURVEY
PM 143098	423 178.639	6 418 828.111	20.903	A	1	2	GNSS SURVEY
SSH 63603	423 234.915	6 418 329.89	15	C	C	U	GNSS SURVEY

COMBINED SCALE AND SEA LEVEL CORRECTION : 1.0003351
 M.G.A. CO-ORDINATES OBTAINED FROM SCIMS 15.07.2016. ZONE : 56

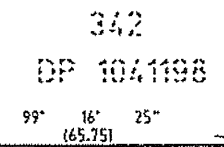
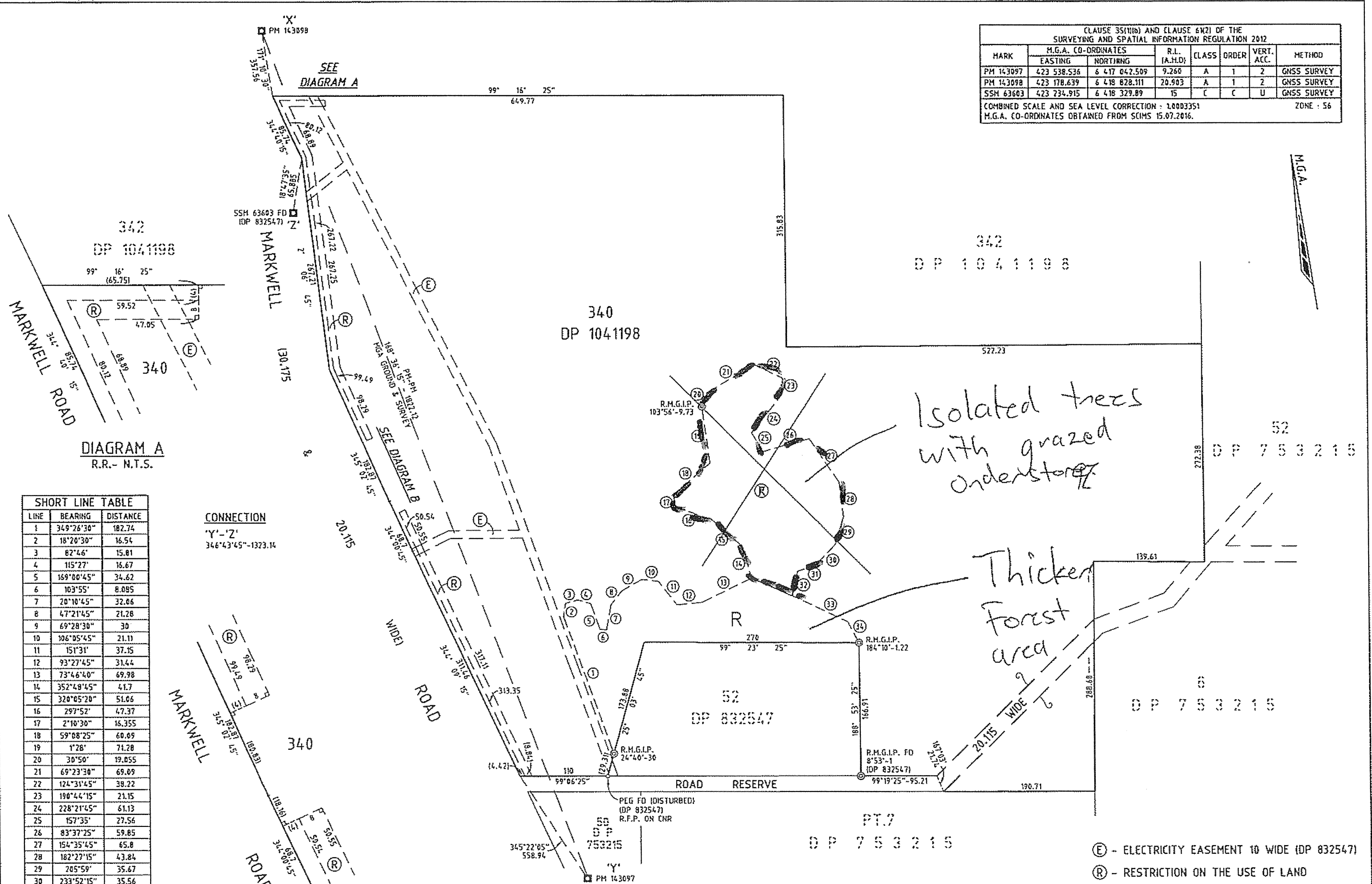


DIAGRAM A
R.R.- N.T.S.

LINE	BEARING	DISTANCE
1	349°26'30"	182.74
2	18°26'30"	16.54
3	82°46'	15.81
4	115°27'	16.67
5	169°00'45"	34.62
6	103°55'	8.085
7	20°10'45"	32.66
8	47°21'45"	21.28
9	69°28'30"	30
10	106°05'45"	21.11
11	151°31'	37.35
12	93°27'45"	31.44
13	73°46'40"	69.98
14	352°49'45"	41.7
15	320°05'20"	51.06
16	297°52'	47.37
17	2°10'30"	16.355
18	59°08'25"	60.69
19	1°28'	71.28
20	30°50'	19.055
21	69°23'30"	69.09
22	124°31'45"	38.22
23	190°44'15"	21.15
24	228°21'45"	61.13
25	157°35'	27.56
26	83°37'25"	59.85
27	154°35'45"	65.8
28	182°27'15"	43.84
29	205°59'	35.67
30	233°52'15"	35.56
31	259°09'45"	24.62
32	282°09'	31.07
33	124°31'40"	77.07
34	161°41'	29.54

CONNECTION
 'Y'-'Z'
 346°43'45"-1323.14

DIAGRAM B
R.R.- N.T.S.

Surveyor: FRANK COMPTON
 Date of Survey: 15.07.2016
 Surveyor's Ref: 3070

PLAN OF EASEMENT WITHIN LOT 340 DP 1041198

LGA: MID-COAST
 Locality: BULAHDELAH
 Subdivision No:
 Lengths are in metres. Reduction Ratio 1:3000

Registered

DP